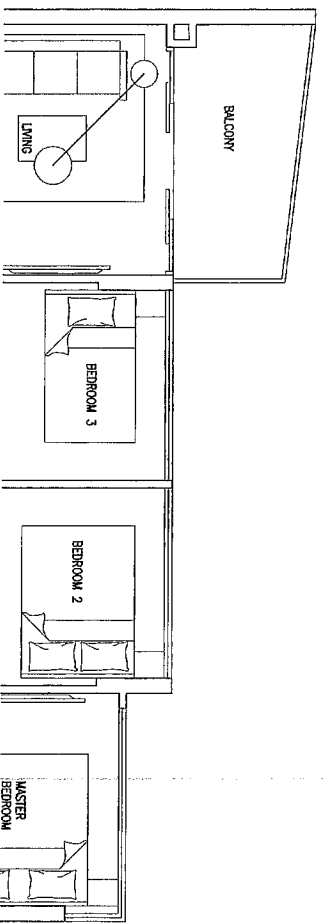


Type C1

sqm/ sqft
(Mirrored Units)

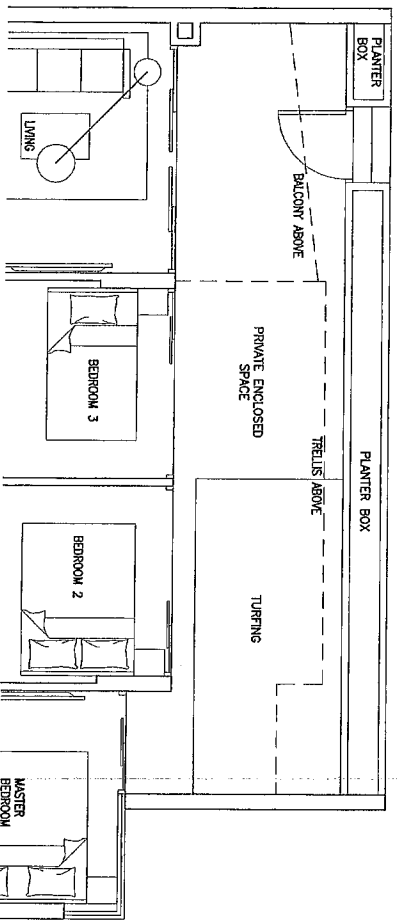
#02-03	#02-08	#02-50	#02-42
#04-03	#04-08	#04-50	#04-42
#06-03	#06-08	#06-50	#06-42
#08-03	#08-08	#08-50	#08-42
#10-03	#10-08	#10-50	#10-42
#12-03	#12-08	#12-50	#12-42



Type C1

sqm/ sqft
(Mirrored Units)

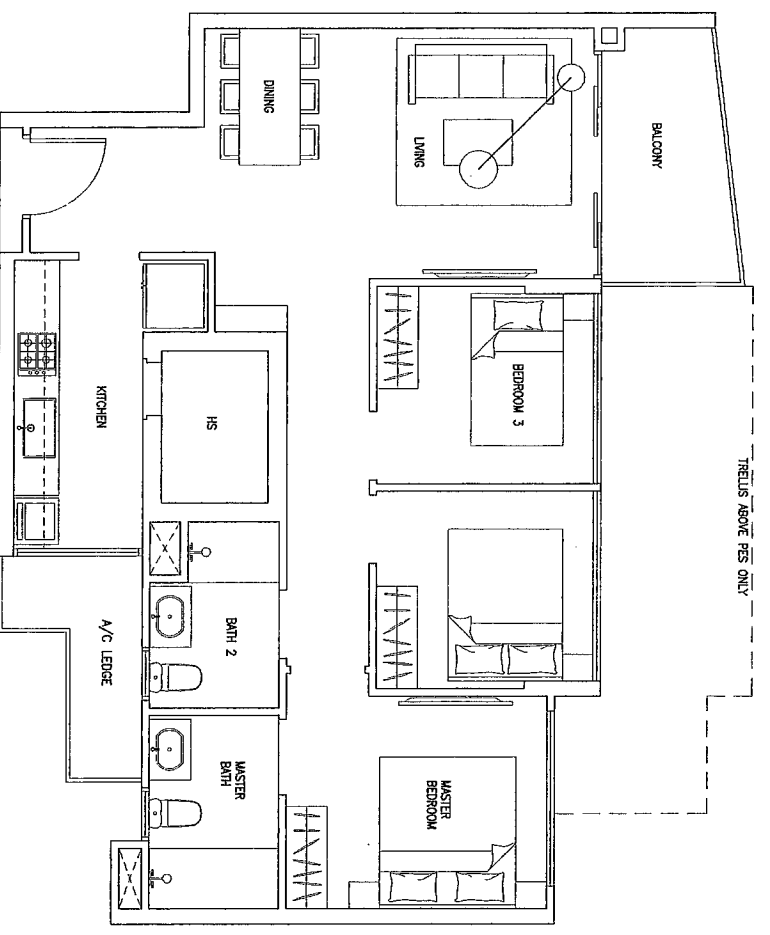
#03-03	#03-08	#03-50	#03-42
#05-03	#05-08	#05-50	#05-42
#07-03	#07-08	#07-50	#07-42
#09-03	#09-08	#09-50	#09-42
#11-03	#11-08	#11-50	#11-42
#13-03	#13-08	#13-50	#13-42



Type C1(P)

sqm/ sqft
(Mirrored Units)

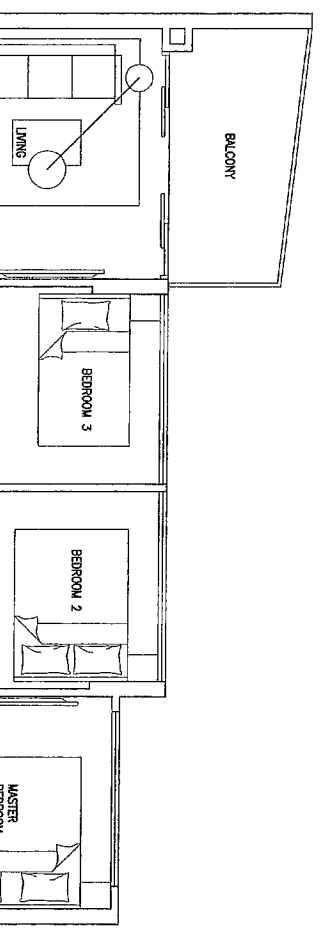
#01-03	#01-08
	#01-42
	#01-50



Type C1

sqm/ sqft
(Mirrored Units)

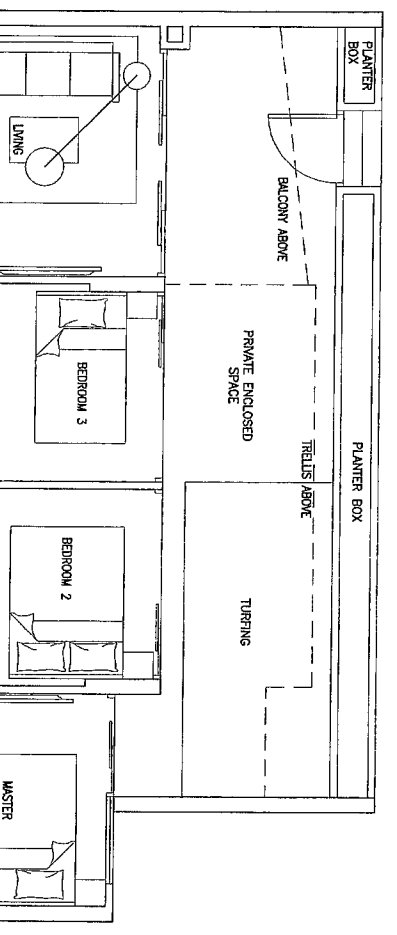
#02-04	#02-07	#02-12	#02-15
#04-04	#04-07	#04-12	#04-15
#06-04	#06-07	#06-12	#06-15
#08-04	#08-07	#08-12	#08-15
#10-04	#10-07	#10-12	#10-15
#12-04	#12-07	#12-12	#12-15



Type C1

sqm/ sqft
(Mirrored Units)

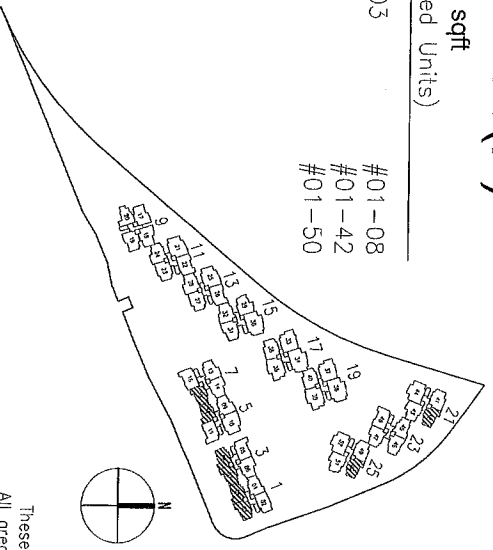
#03-04	#03-07	#03-12	#03-15
#05-04	#05-07	#05-12	#05-15
#07-04	#07-07	#07-12	#07-15
#09-04	#09-07	#09-12	#09-15
#11-04	#11-07	#11-12	#11-15
#13-04		#13-12	



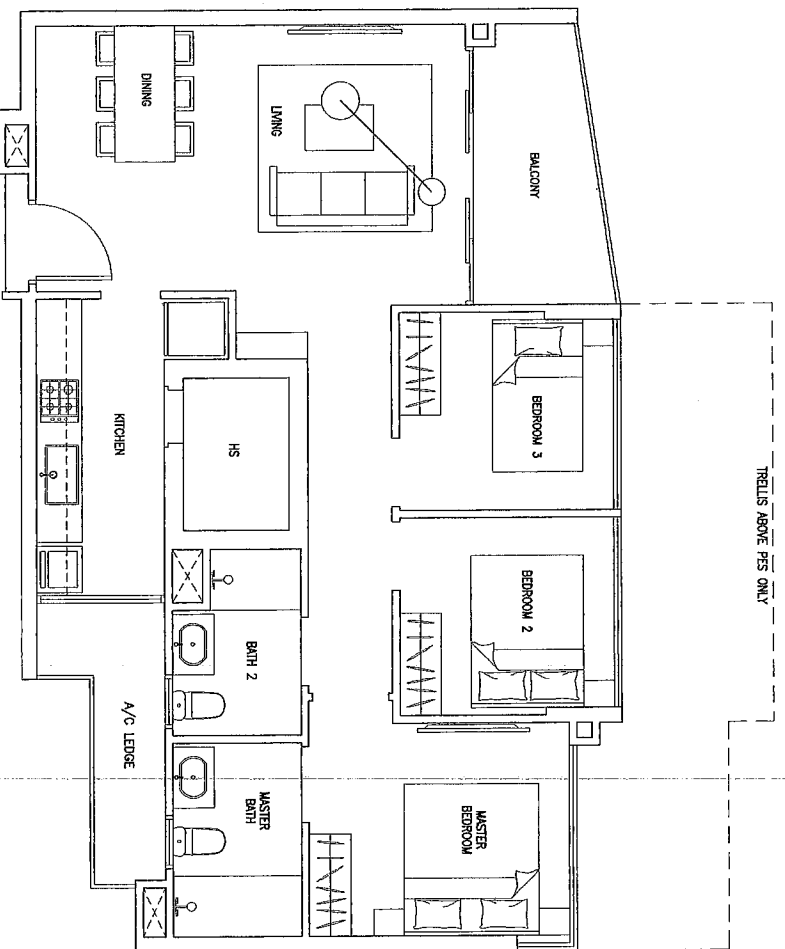
Type C1(P)

sqm/ sqft
(Mirrored Units)

#01-04	#01-07
#01-12	#01-15



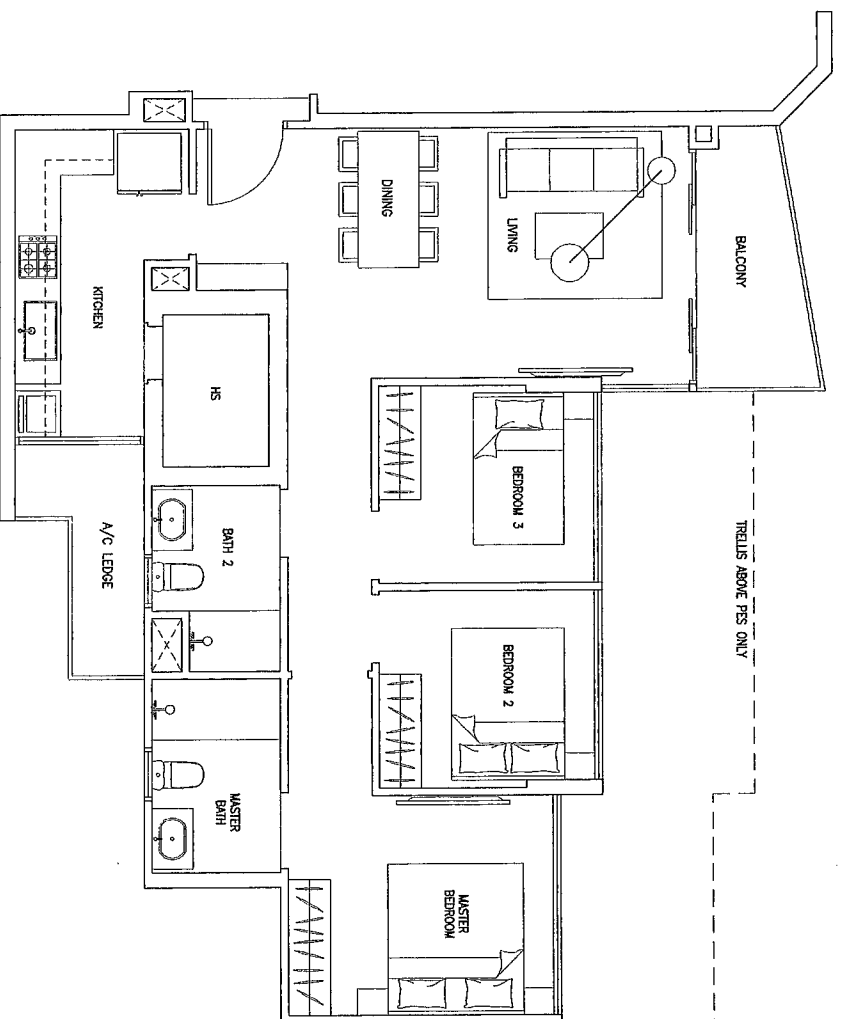
The plans are subject to change as may be required or approved by the relevant authorities. These are not drawn to scale and are for the purpose of a visual representation of the different layouts that are available. All areas are approximate and subject to final survey. The developer and its agents cannot be held liable for any inaccuracies.



Type C2

sqm/ sqft

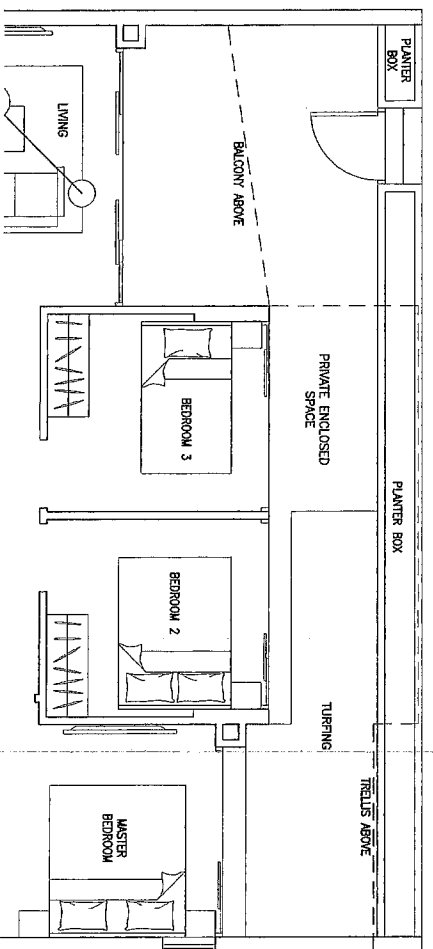
#02-02 to #12-02



Type C3

sqm/ sqft

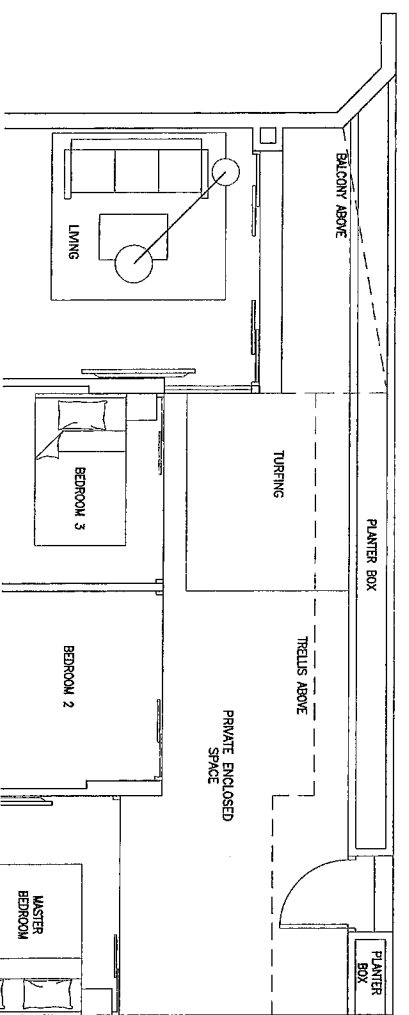
#02-20 to #12-20



Type C2(P)

sqm/ sqft

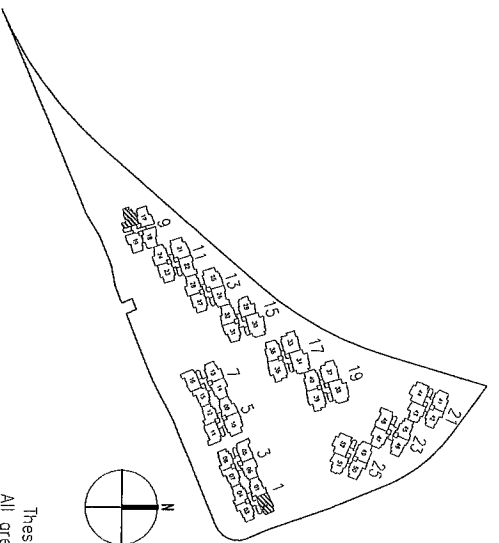
#01-02



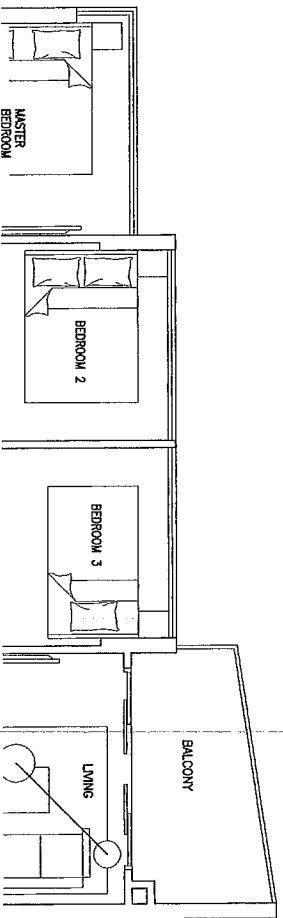
Type C3(P)

sqm/ sqft

#01-20



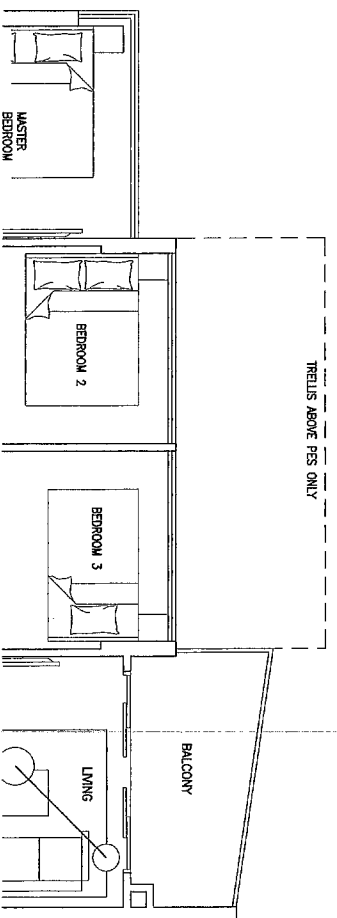
The plans are subject to change as may be required or approved by the relevant authorities. These are not drawn to scale and are for the purpose of a visual representation of the different layouts that are available. All areas are approximate and subject to final survey. The developer and its agents cannot be held liable for any inaccuracies.



Type C4

sqm/ sqft
(Mirrored Units)

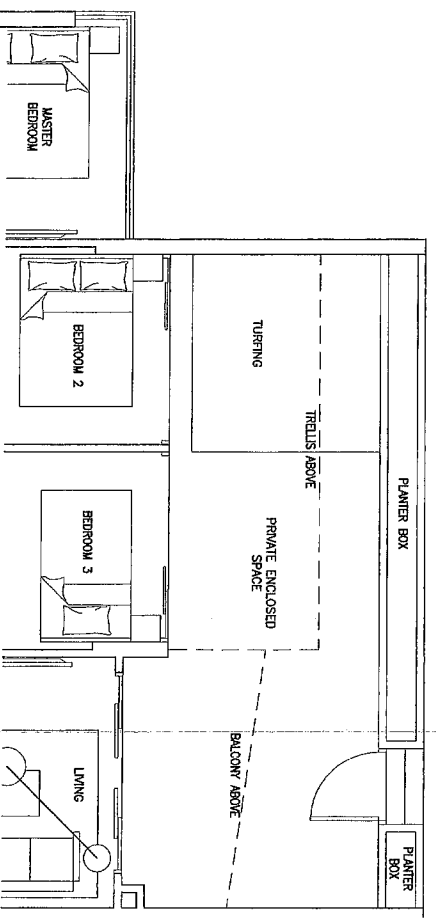
- #03-46
- #05-46
- #07-46
- #09-46
- #11-46



Type C4

sqm/ sqft
(Mirrored Units)

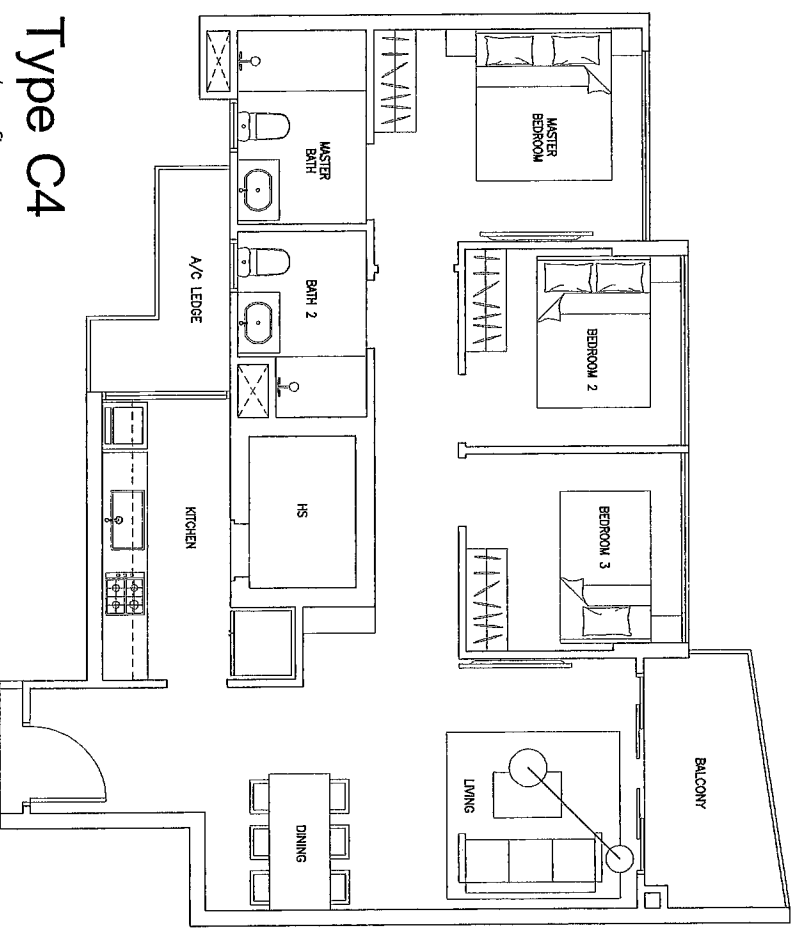
- #02-46
- #04-46
- #06-46
- #08-46
- #10-46
- #12-46



Type C4(P)

sqm/ sqft
(Mirrored Units)

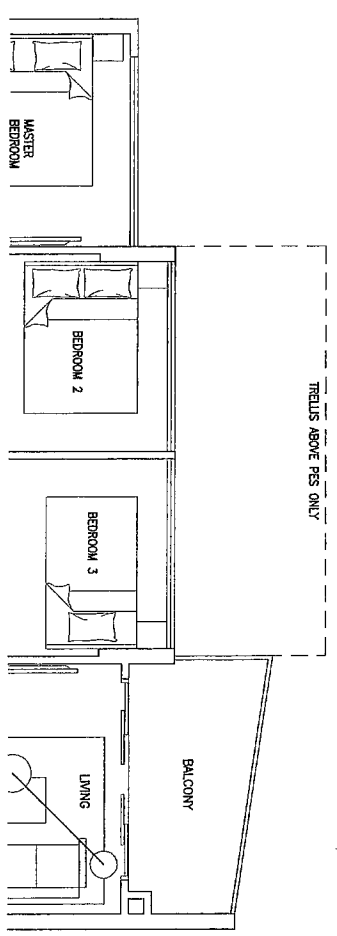
- #01-46



Type C4

sqm/ sqft

- #03-45
- #05-45
- #07-45
- #09-45
- #11-45
- #13-45

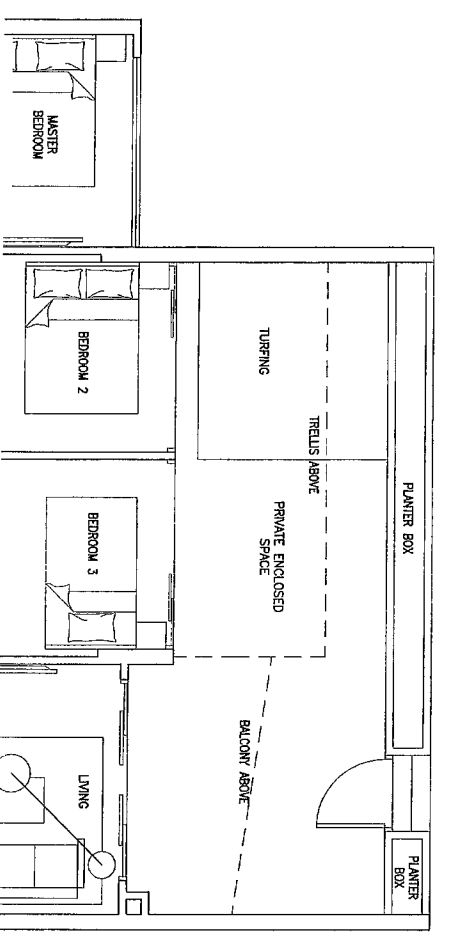


Type C4

sqm/ sqft

- #02-01 to #12-01

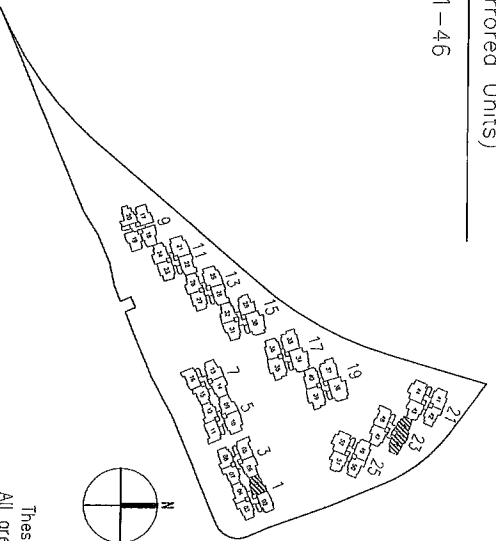
- #02-45
- #04-45
- #06-45
- #08-45
- #10-45
- #12-45



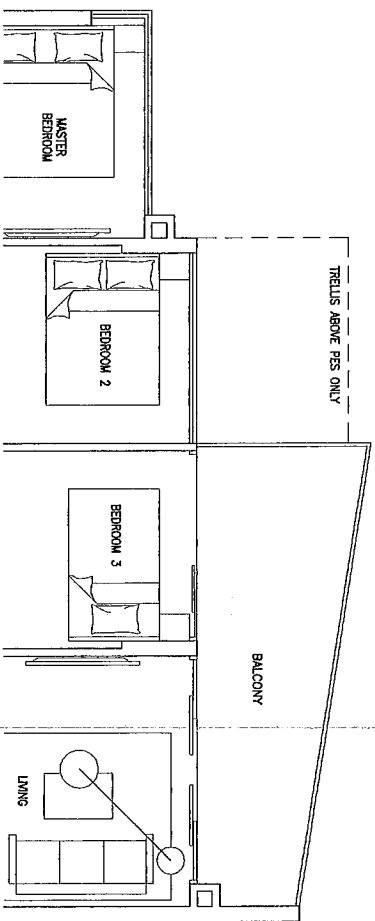
Type C4(P)

sqm/ sqft

- #01-01 #01-45



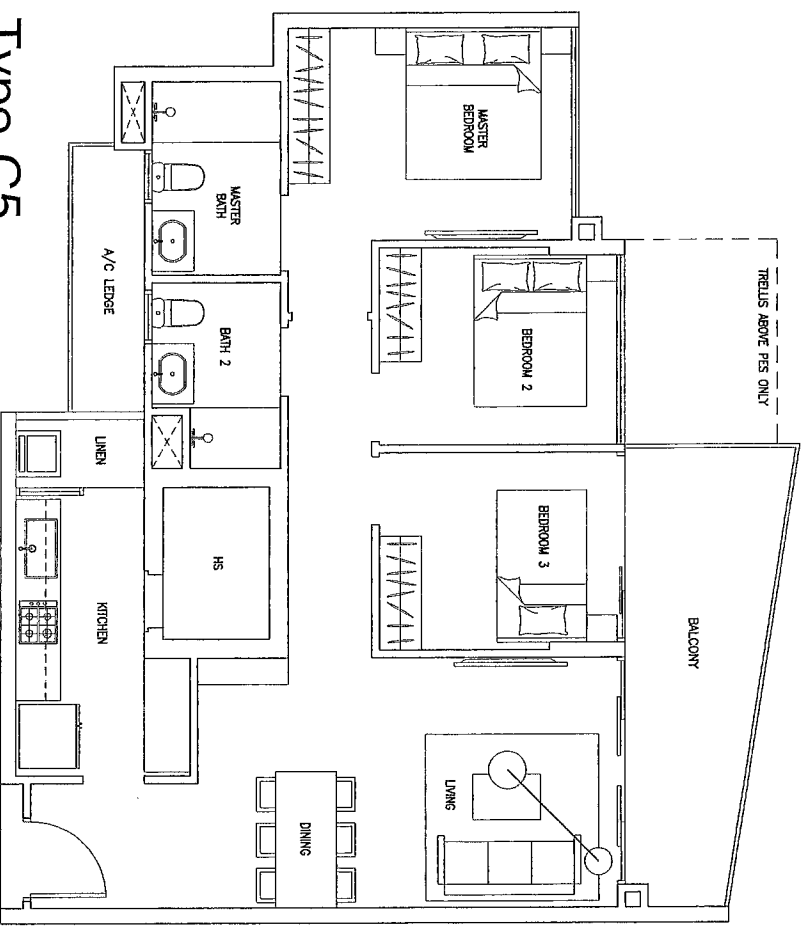
The plans are subject to change as may be required or approved by the relevant authorities.
These are not drawn to scale and are for the purpose of a visual representation of the different layouts that are available.
All areas are approximate and subject to final survey. The developer and its agents cannot be held liable for any inaccuracies.



Type C5

sqm/ sqft

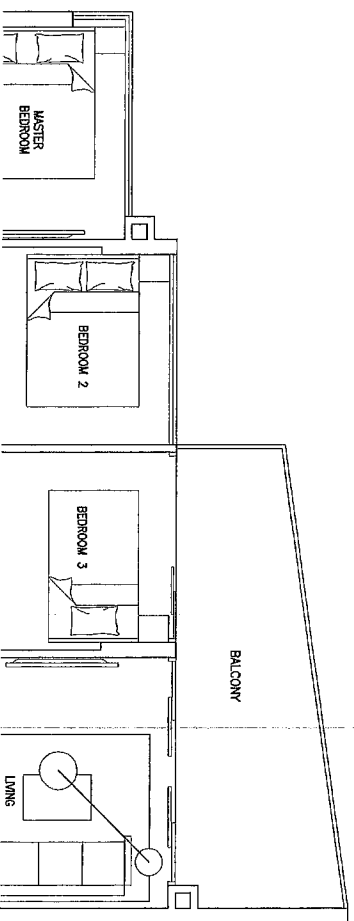
#02-29	#09-29	#02-51	#08-51
#04-29	#10-29	#04-51	#10-51
#06-29	#11-29	#06-51	#12-51
#08-29	#12-29		



Type C5

sqm/ sqft

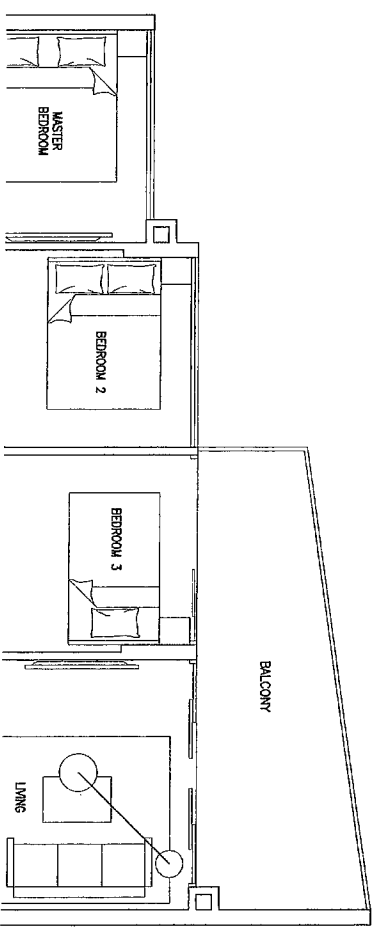
#02-43	#09-43
#04-43	#10-43
#06-43	#11-43
#08-43	#12-43



Type C5

sqm/ sqft

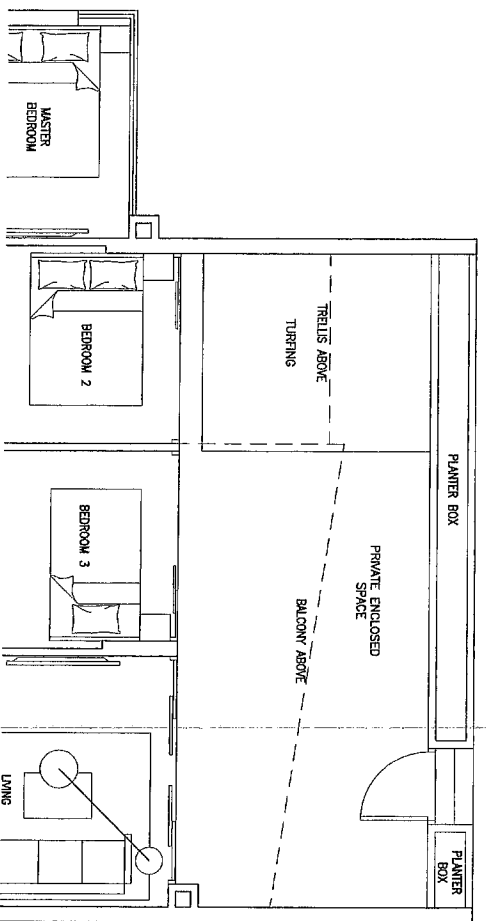
#03-29	#03-51
#05-29	#05-51
#07-29	#07-51
#09-29	#09-51
#11-29	#11-51



Type C5

sqm/ sqft

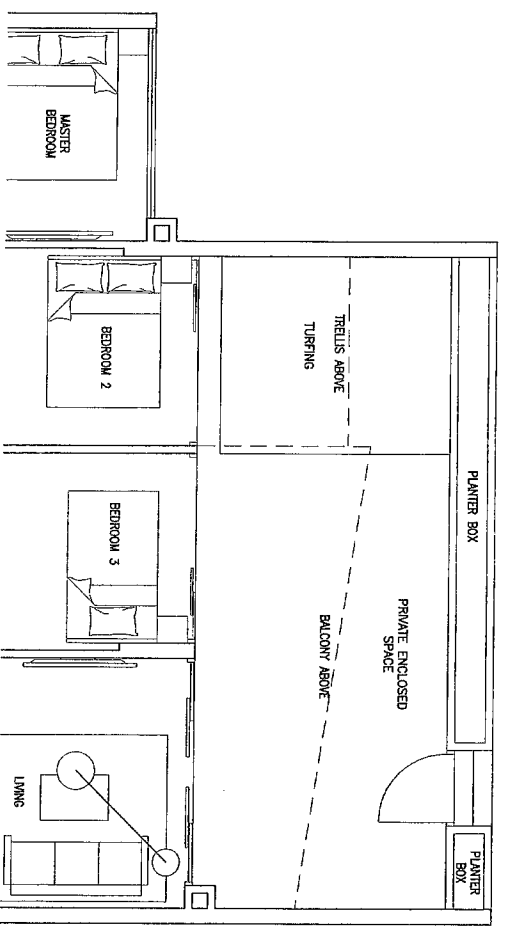
#03-43
#05-43
#07-43



Type C5(P)

sqm/ sqft

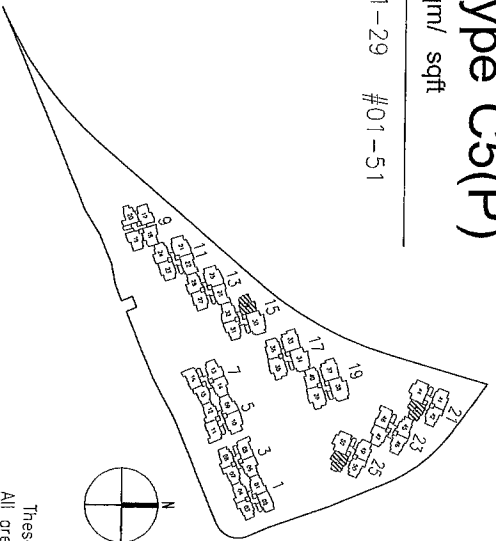
#01-29	#01-51
--------	--------



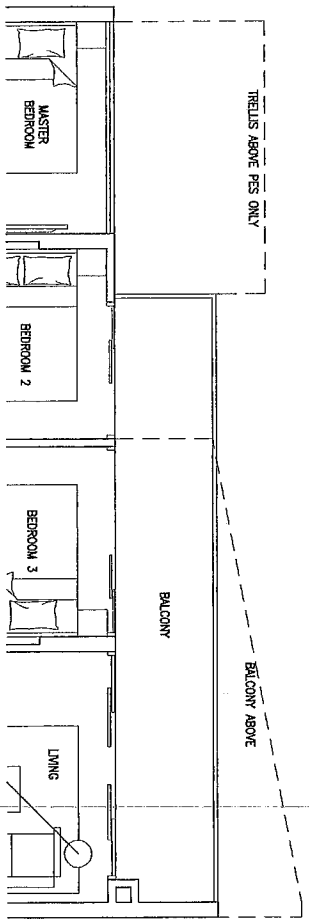
Type C5(P)

sqm/ sqft

#01-43



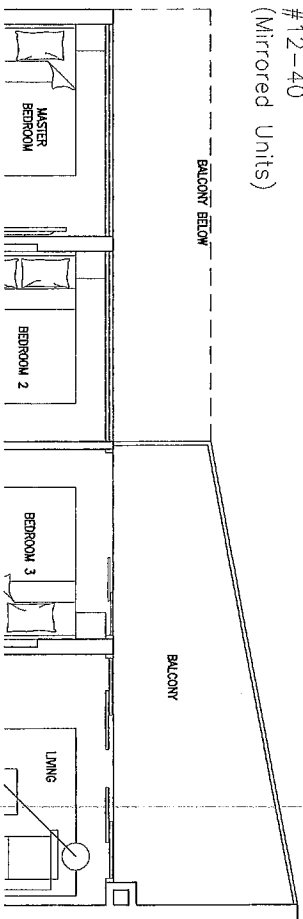
The plans are subject to change as may be required or approved by the relevant authorities. These are not drawn to scale and are for the purpose of a visual representation of the different layouts that are available. All areas are approximate and subject to final survey. The developer and its agents cannot be held liable for any inaccuracies.



Type C6
sqm/ sqft
(Mirrored Units)

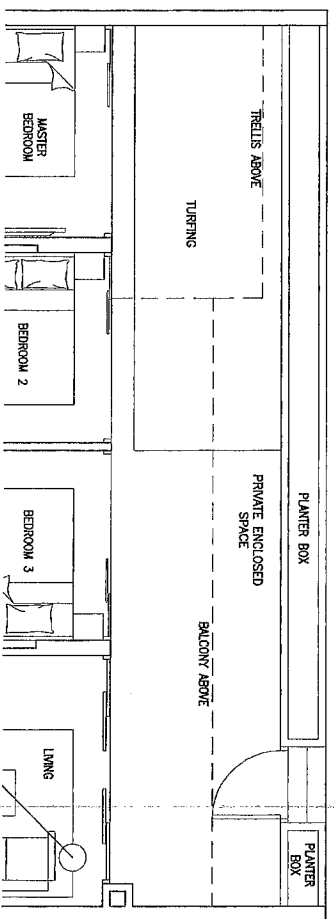
#02 to #12 - 49

- #02-40
- #04-40
- #06-40
- #08-40
- #10-40
- #12-40



Type C6
sqm/ sqft
(Mirrored Units)

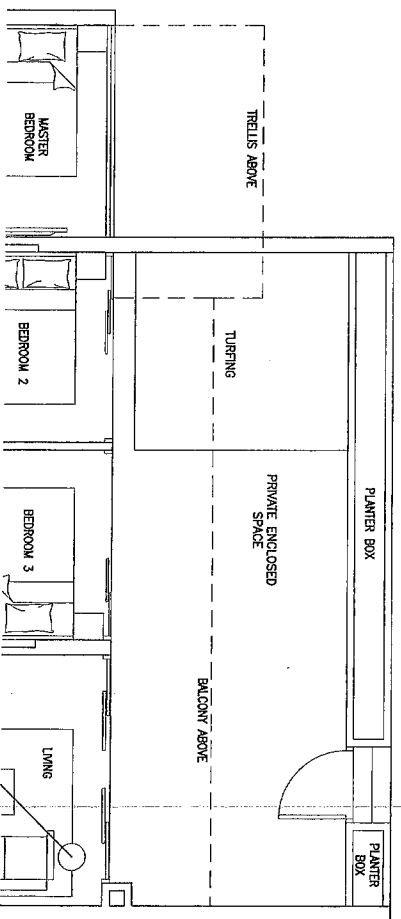
- #03-40
- #05-40
- #07-40
- #09-40
- #11-40
- #13-40



Type C6(P)

sqm/ sqft
(Mirrored Units)

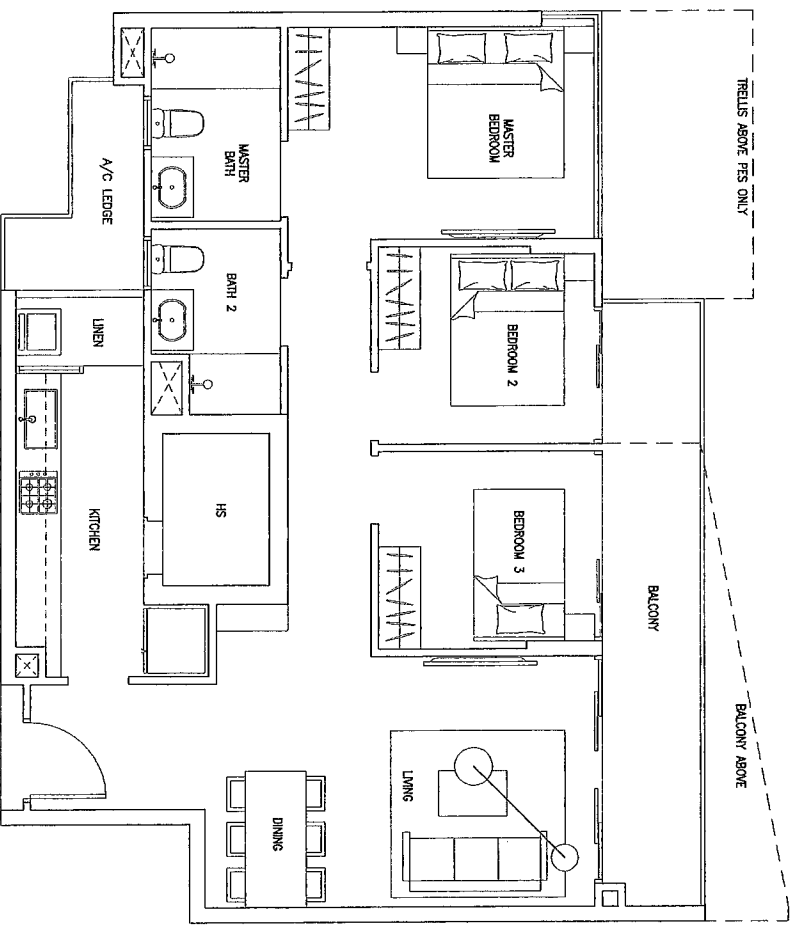
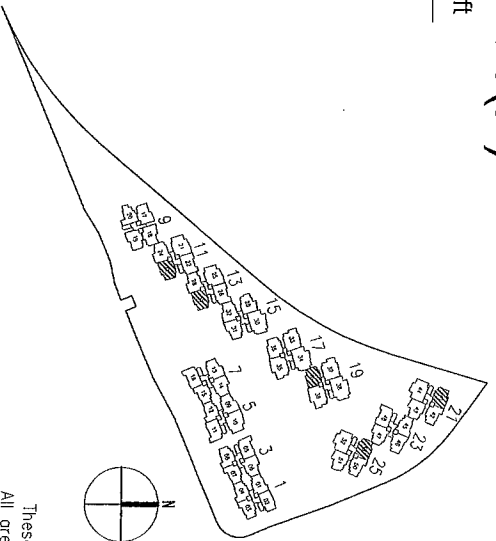
#01-40



Type C6(P)

sqm/ sqft

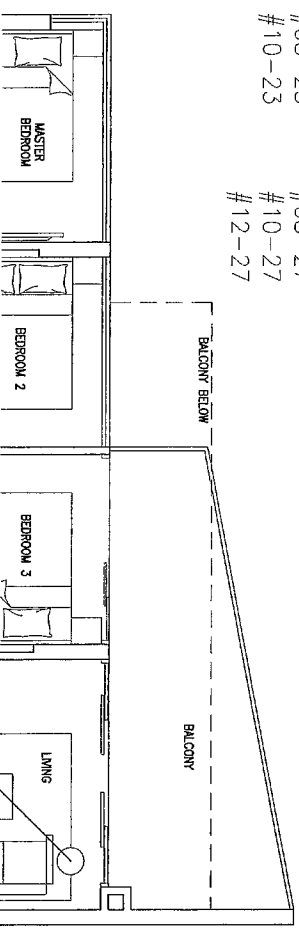
#01-49



Type C6
sqm/ sqft

#02 to #12 - 41

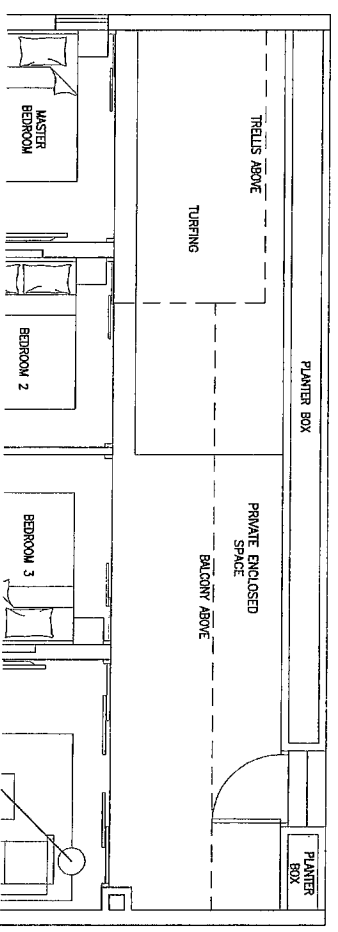
- #02-23
- #04-23
- #06-23
- #08-23
- #10-23
- #12-27



Type C6

sqm/ sqft

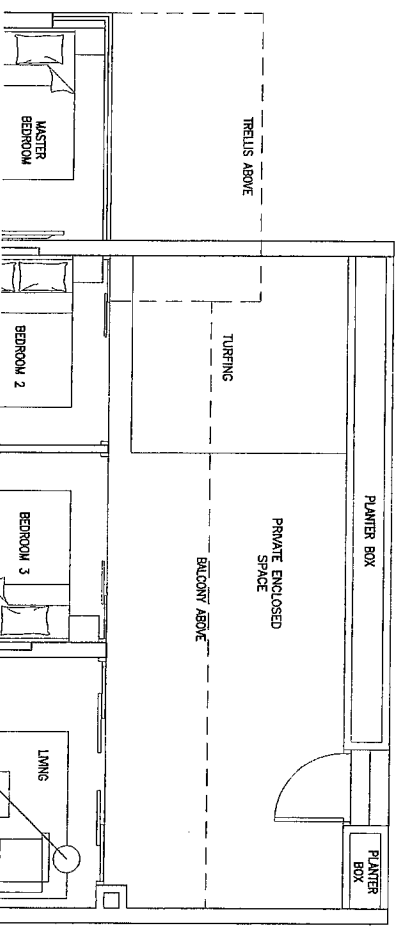
- #03-23
- #05-23
- #07-23
- #09-23
- #11-23
- #03-27
- #05-27
- #07-27
- #09-27
- #11-27



Type C6(P)

sqm/ sqft

#01-23 #01-27

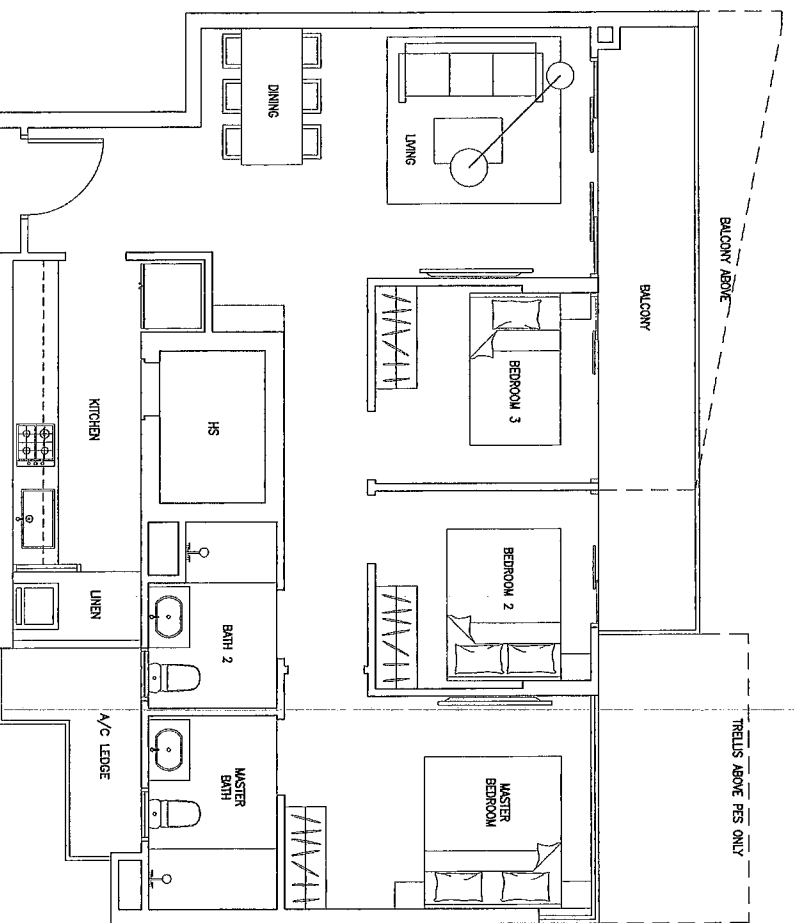


Type C6(P)

sqm/ sqft

#01-41

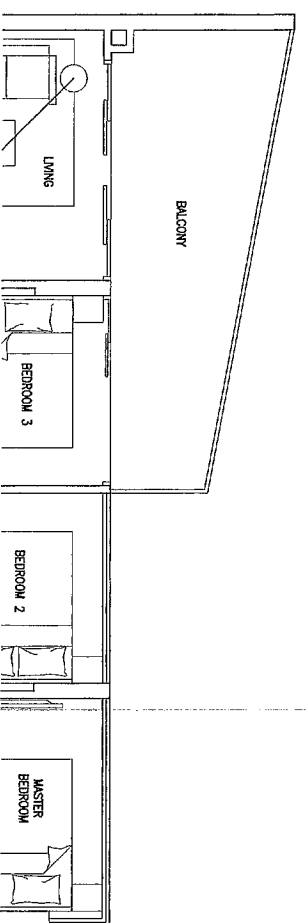
The plans are subject to change as may be required or approved by the relevant authorities. These are not drawn to scale and are for the purpose of a visual representation of the different layouts that are available. All areas are approximate and subject to final survey. The developer and its agents cannot be held liable for any inaccuracies.



Type C6

sqm/ sqft

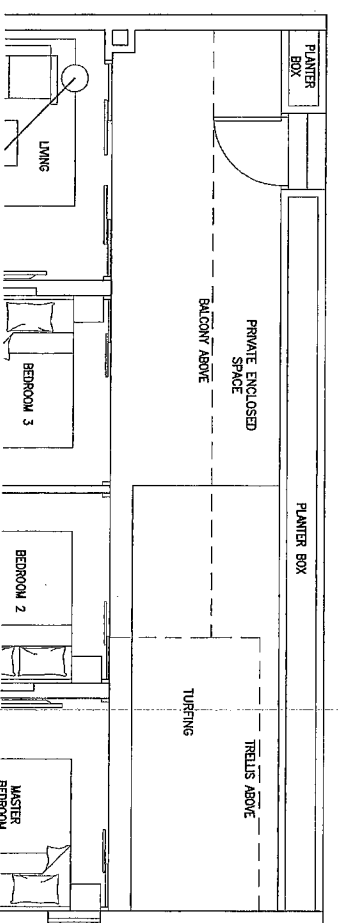
- #02-36
- #04-36
- #06-36
- #08-36
- #10-36
- #12-36



Type C6

sqm/ sqft

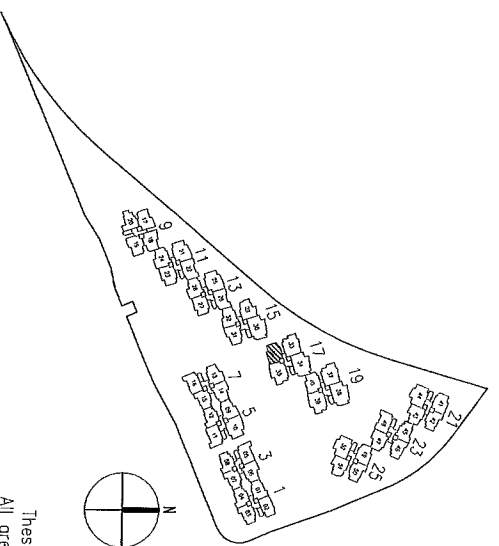
- #03-36
- #05-36
- #07-36
- #09-36
- #11-36



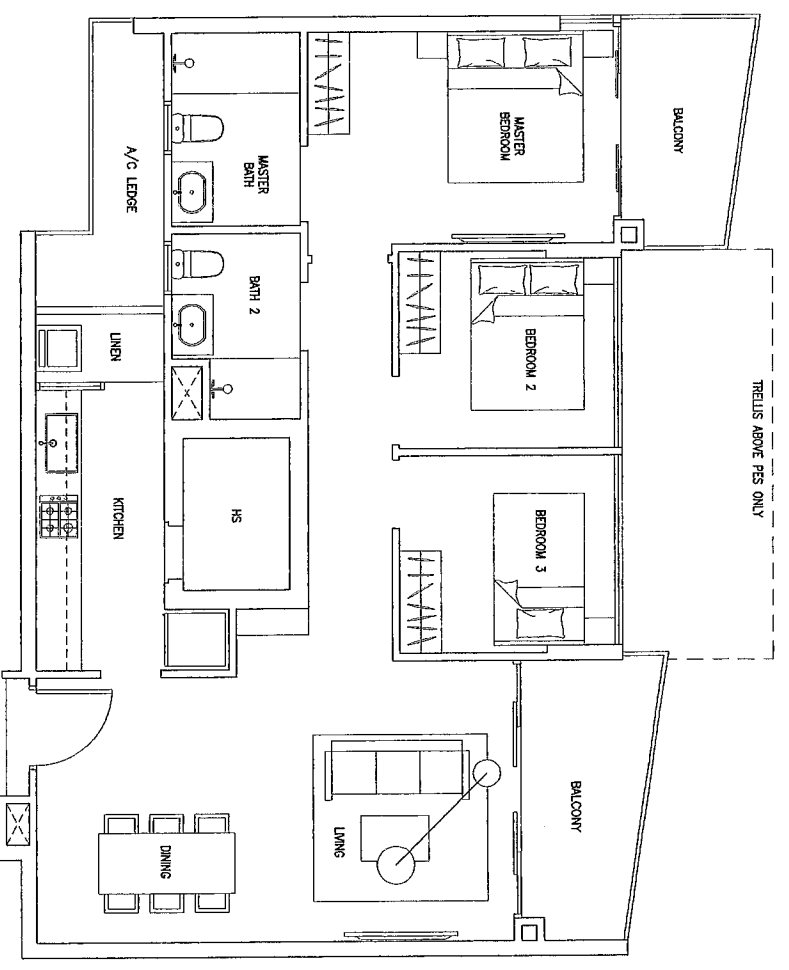
Type C6(P)

sqm/ sqft

- #01-36



The plans are subject to change as may be required or approved by the relevant authorities. These are not drawn to scale and are for the purpose of a visual representation of the different layouts that are available. All areas are approximate and subject to final survey. The developer and its agents cannot be held liable for any inaccuracies.

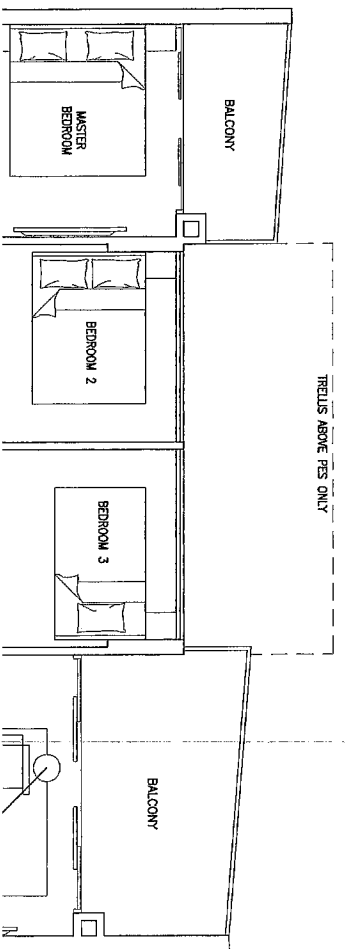


Type C7

sqm/ sqft

(Mirrored Units)

#02-05 to #12-05 #02-11 to #12-11 #02-16 to #12-16

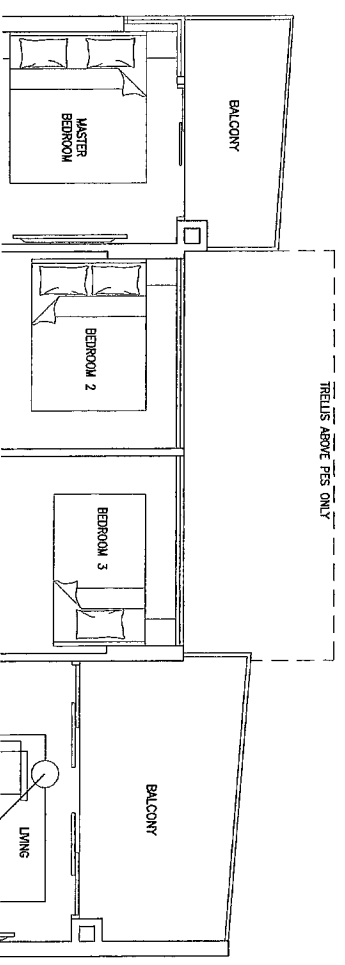


Type C7

sqm/ sqft

(Mirrored Units)

#02-22 to #11-22 #02-26 to #12-26

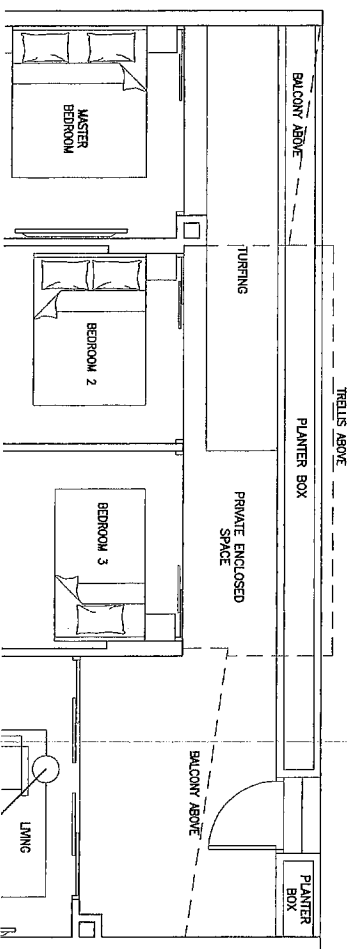


Type C7

sqm/ sqft

(Mirrored Units)

#02-48 to #12-48

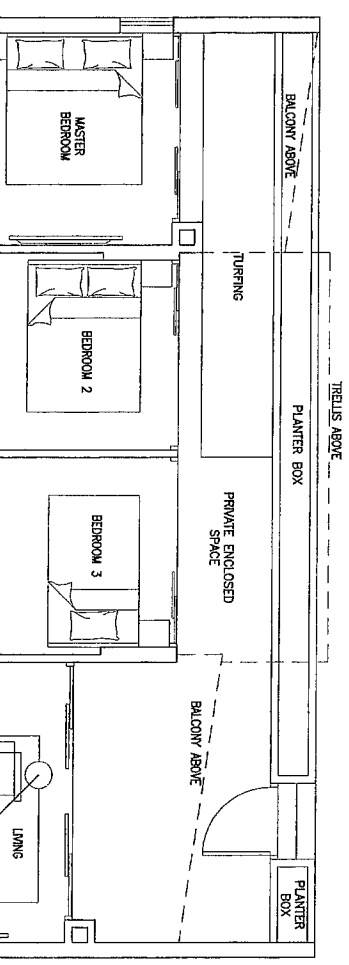


Type C7(P)

sqm/ sqft

(Mirrored Units)

#01-22 #01-26

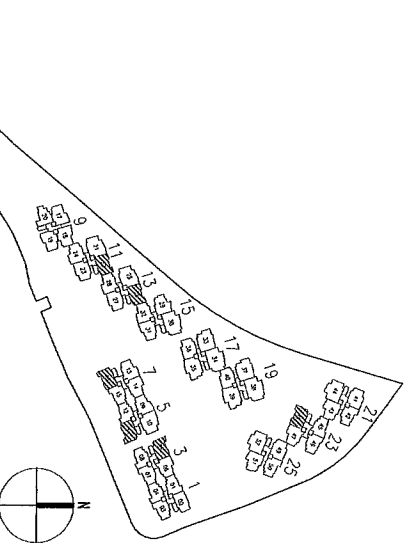


Type C7(P)

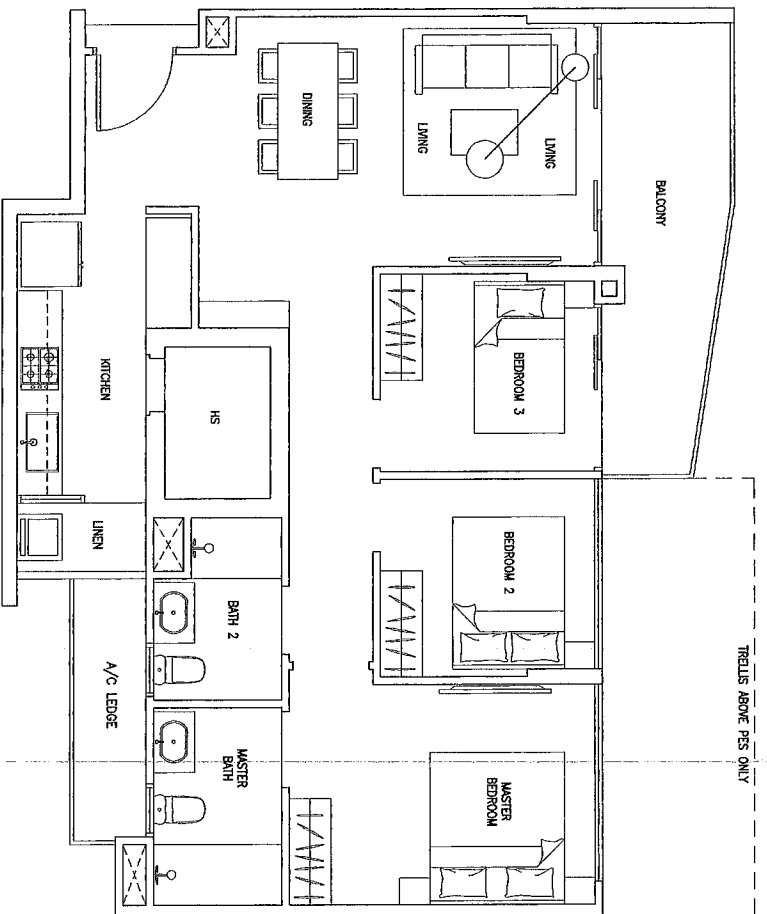
sqm/ sqft

(Mirrored Units)

#01-05 #01-11 #01-16 #01-48



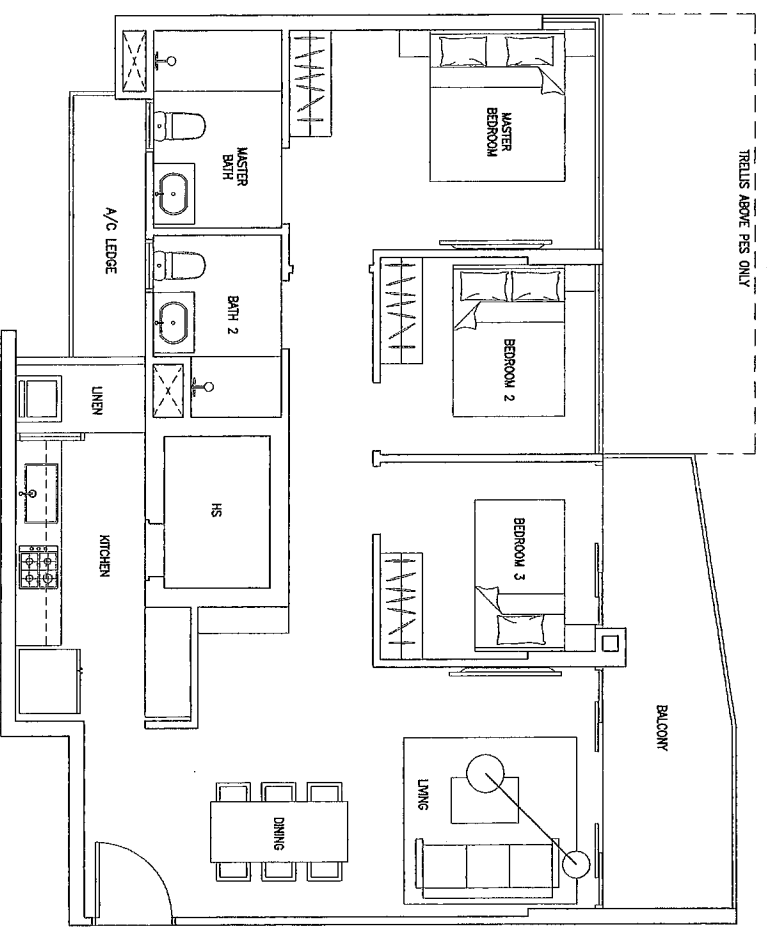
The plans are subject to change as may be required or approved by the relevant authorities. These are not drawn to scale and are for the purpose of a visual representation of the different layouts that are available. All areas are approximate and subject to final survey. The developer and its agents cannot be held liable for any inaccuracies.



Type C8

sqm/ sqft

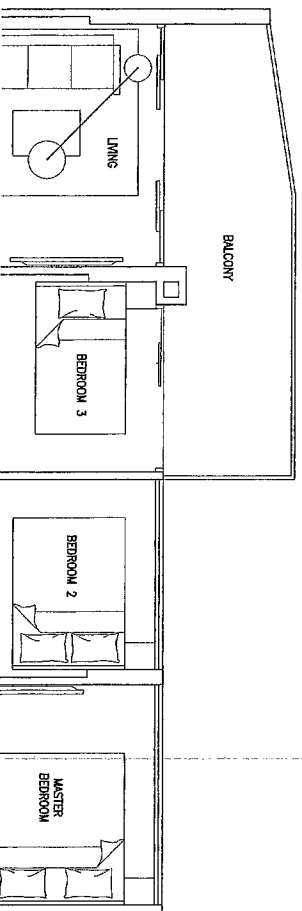
- #02-18
- #04-18
- #06-18



Type C8

sqm/ sqft

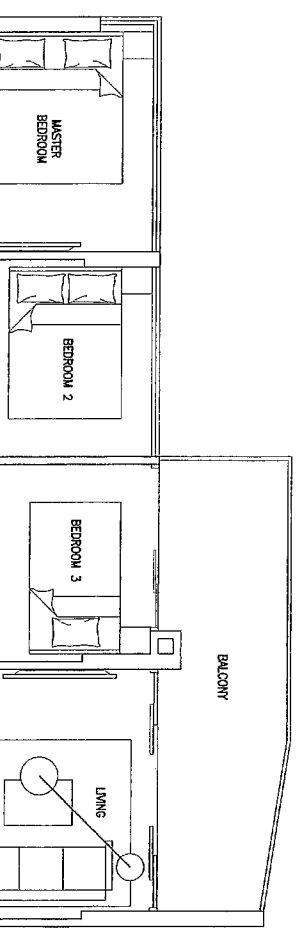
- #02-17
- #04-17
- #06-17
- #02-19
- #04-19
- #06-19
- #08-19
- #10-19
- #12-19



Type C8

sqm/ sqft

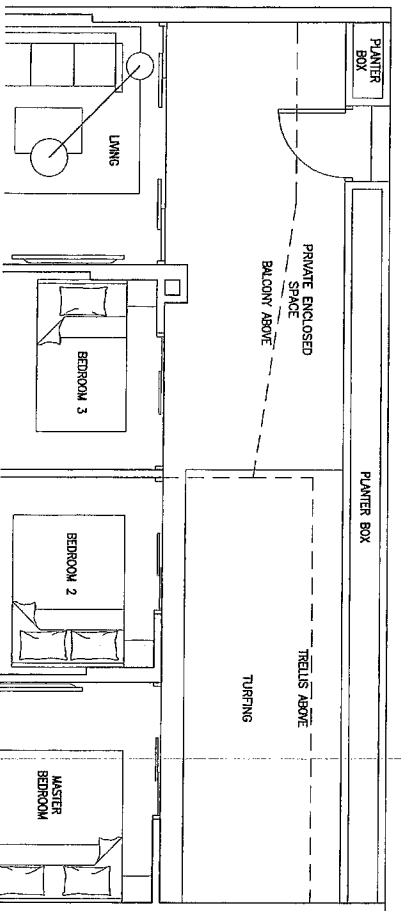
- #03-18
- #05-18
- #07-18
- #08-18
- #09-18
- #10-18
- #11-18



Type C8

sqm/ sqft

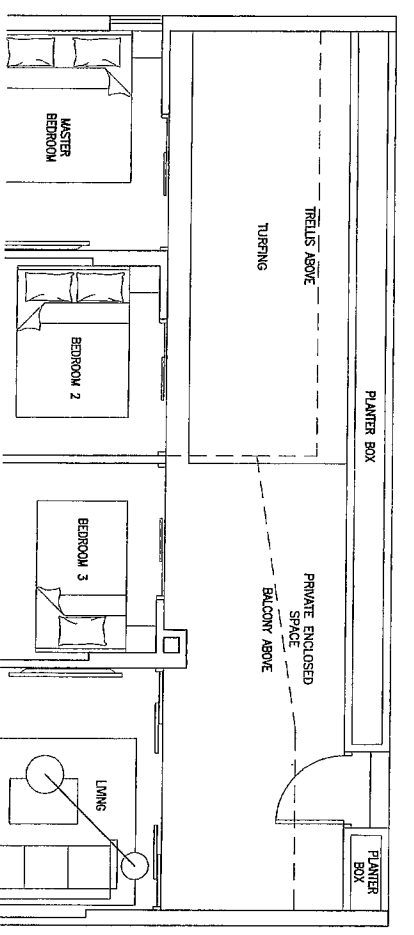
- #03-17
- #05-17
- #07-17
- #08-17
- #09-17
- #10-17
- #11-17
- #03-19
- #05-19
- #07-19
- #08-19
- #09-19
- #11-19



Type C8(P)

sqm/ sqft

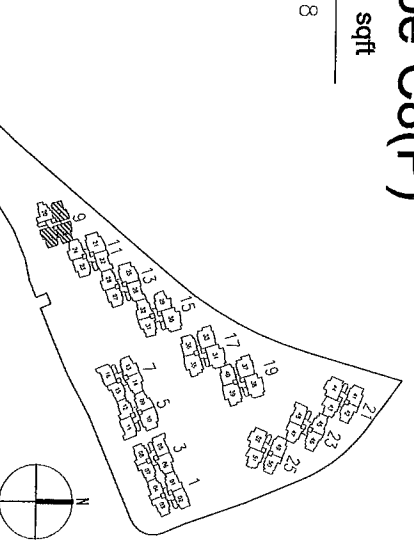
- #01-18



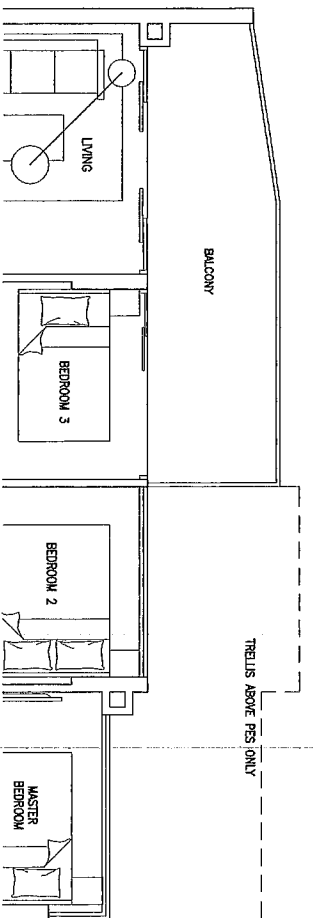
Type C8(P)

sqm/ sqft

- #01-17
- #01-19



The plans are subject to change as may be required or approved by the relevant authorities. These are not drawn to scale and are for the purpose of a visual representation of the different layouts that are available. All areas are approximate and subject to final survey. The developer and its agents cannot be held liable for any inaccuracies.

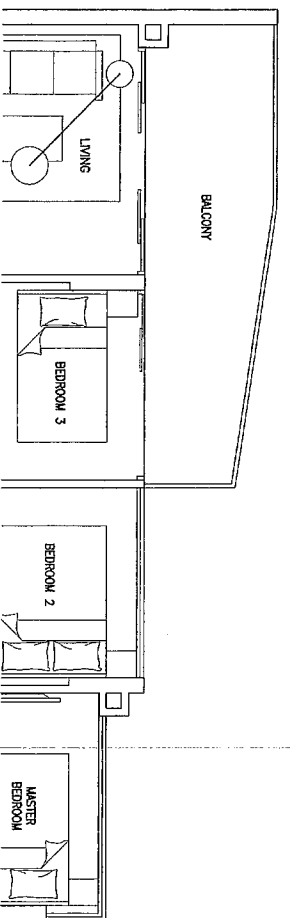


Type C9

sqm/ sqft

(Mirrored Units) (Mirrored Units)

- | | |
|--------|--------|
| #02-13 | #02-31 |
| #04-13 | #04-31 |
| #06-13 | #06-31 |
| #08-13 | #08-31 |
| #10-13 | #10-31 |
| #12-13 | #12-31 |

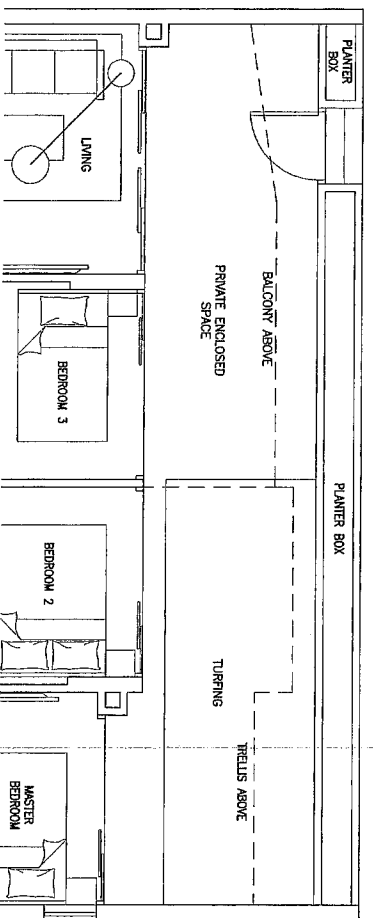


Type C9

sqm/ sqft

(Mirrored Units) (Mirrored Units)

- | | |
|--------|--------|
| #03-13 | #03-31 |
| #05-13 | #05-31 |
| #07-13 | #07-31 |
| #09-13 | #09-31 |
| #11-13 | #11-31 |

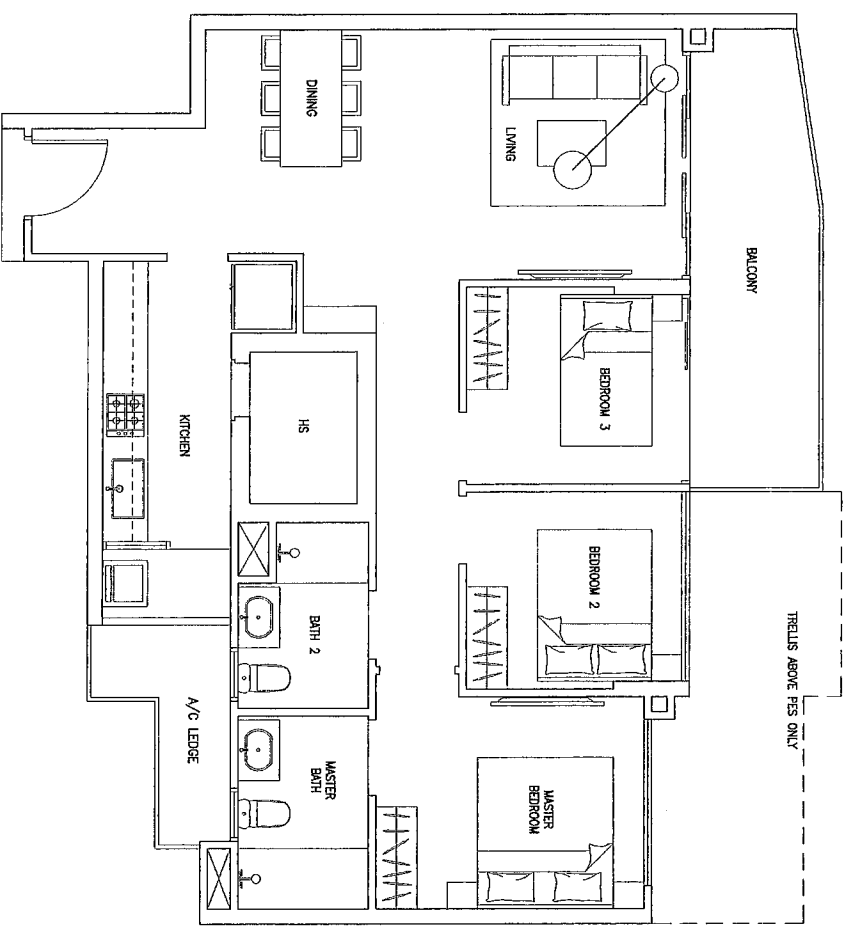


Type C9(P)

sqm/ sqft

(Mirrored Units) (Mirrored Units)

- | | |
|--------|--------|
| #01-13 | #01-31 |
|--------|--------|

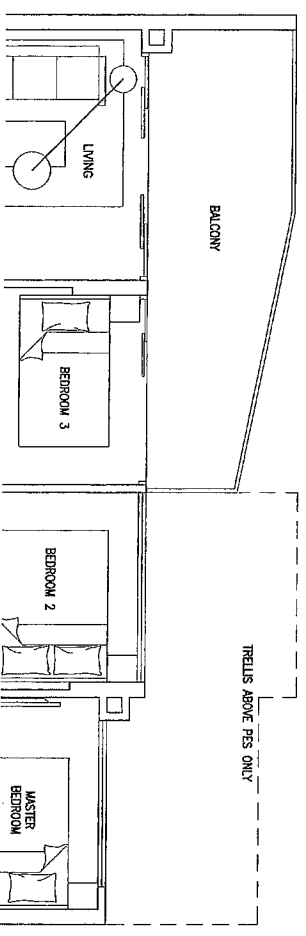


Type C9

sqm/ sqft

(Mirrored Units)

- | | | | |
|---------------|--------|--------|--------|
| #02 to #12-06 | #02-14 | #02-32 | #02-47 |
| #02 to #11-24 | #04-14 | #04-32 | #04-47 |
| #02 to #12-28 | #06-14 | #06-32 | #06-47 |
| | #08-14 | #08-32 | #08-47 |
| | #10-14 | #10-32 | #09-47 |
| | #12-14 | #12-32 | #10-47 |
| | | | #11-47 |
| | | | #12-47 |

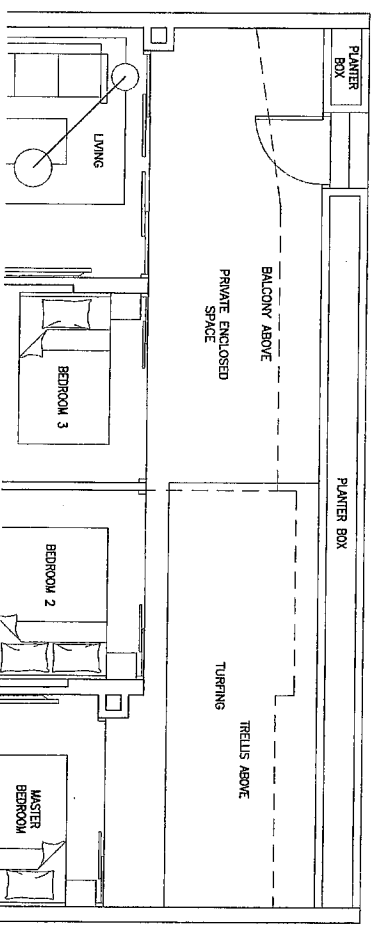


Type C9

sqm/ sqft

(Mirrored Units)

- | | | | |
|------------------|--------|--------|--------|
| #02 to #12-09 | #03-14 | #03-32 | #03-47 |
| (Mirrored Units) | #05-14 | #05-32 | #05-47 |
| | #07-14 | #07-32 | #07-47 |
| | #09-14 | #09-32 | |
| | #11-14 | #11-32 | |
| | | #13-32 | |

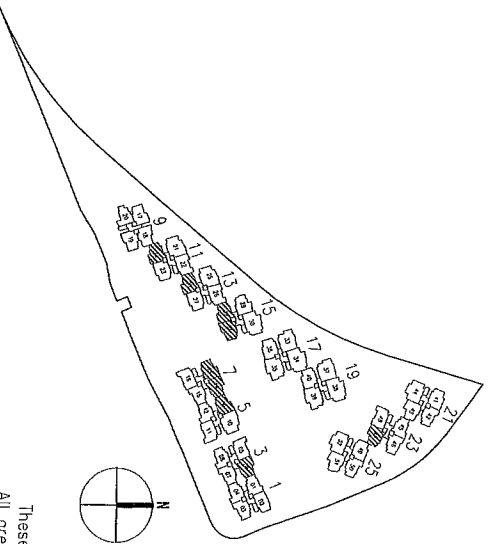


Type C9(P)

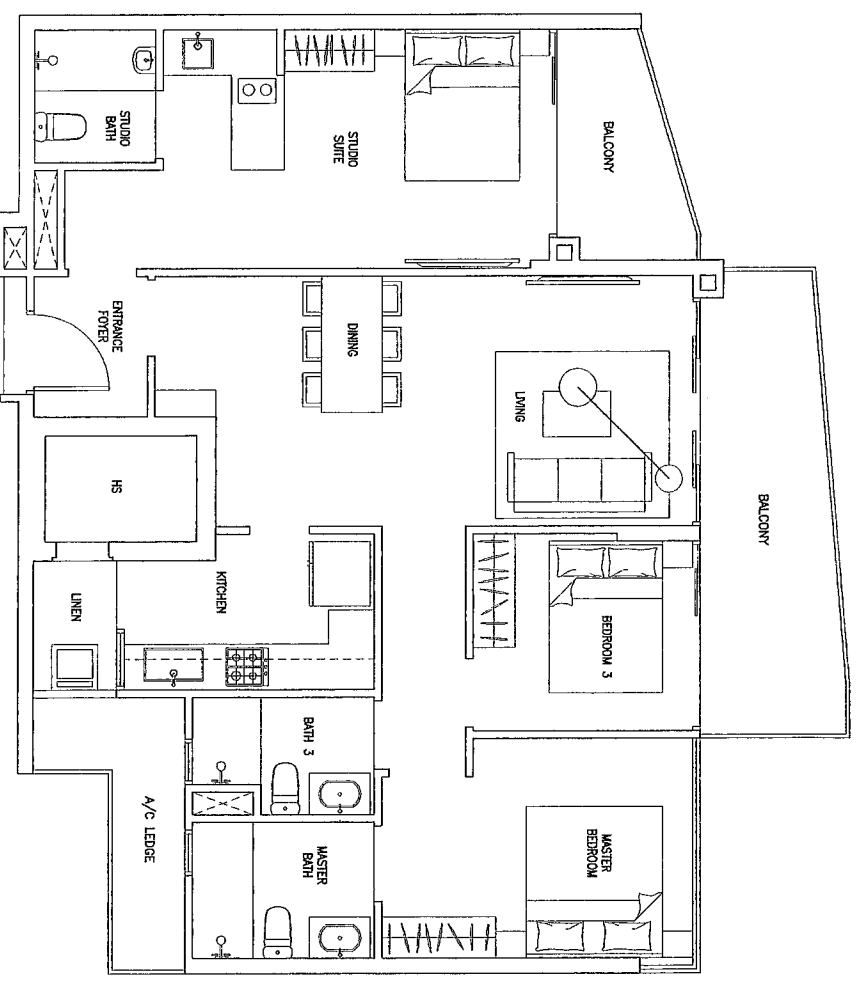
sqm/ sqft

(Mirrored Units)

- | | |
|--------|--------|
| #01-06 | #01-09 |
| #01-14 | #01-47 |
| #01-24 | |
| #01-28 | |
| #01-32 | |



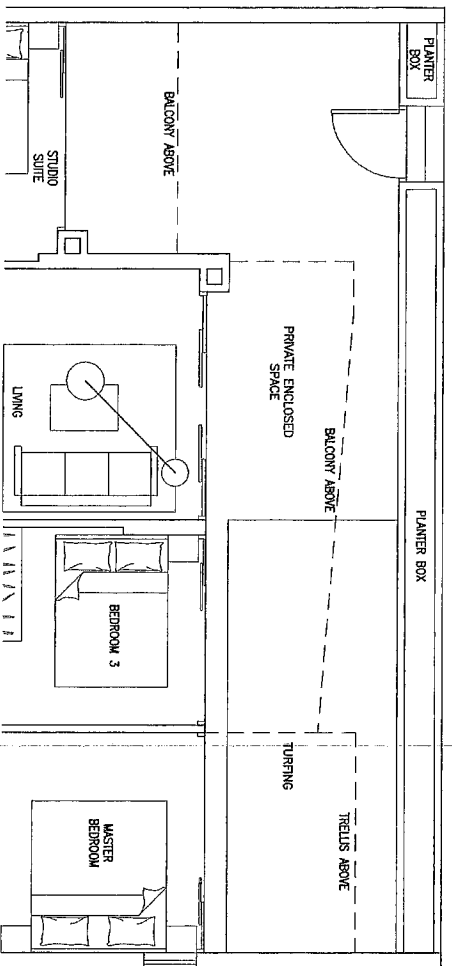
The plans are subject to change as may be required or approved by the relevant authorities. These are not drawn to scale and are for the purpose of a visual representation of the different layouts that are available. All areas are approximate and subject to final survey. The developer and its agents cannot be held liable for any inaccuracies.



Type C10-DK

sqm/ sqft

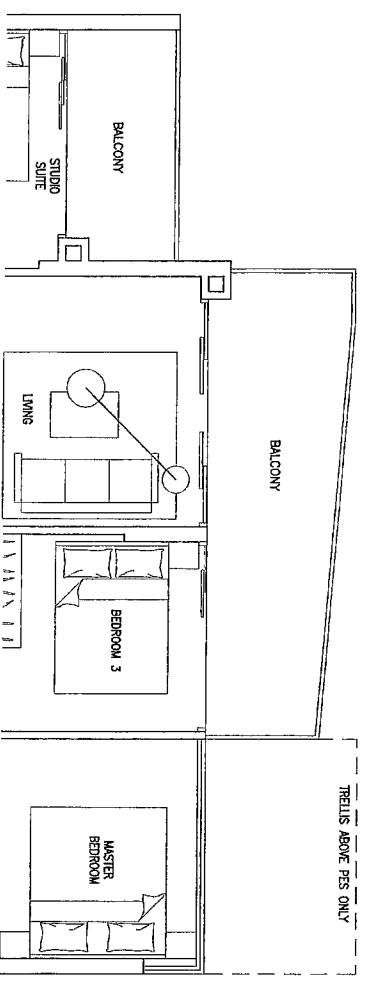
#03-44	#03-52
#05-44	#05-52
#07-44	#07-52
#08-44	#09-52
#09-44	#11-52
#10-44	
#11-44	
#12-44	



Type C10-DK(P)

sqm/ sqft

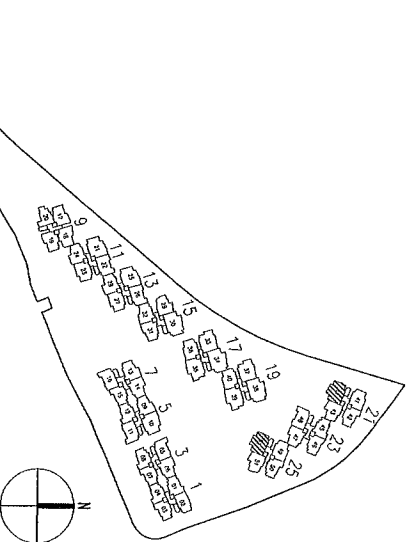
#01-44	#01-52
--------	--------



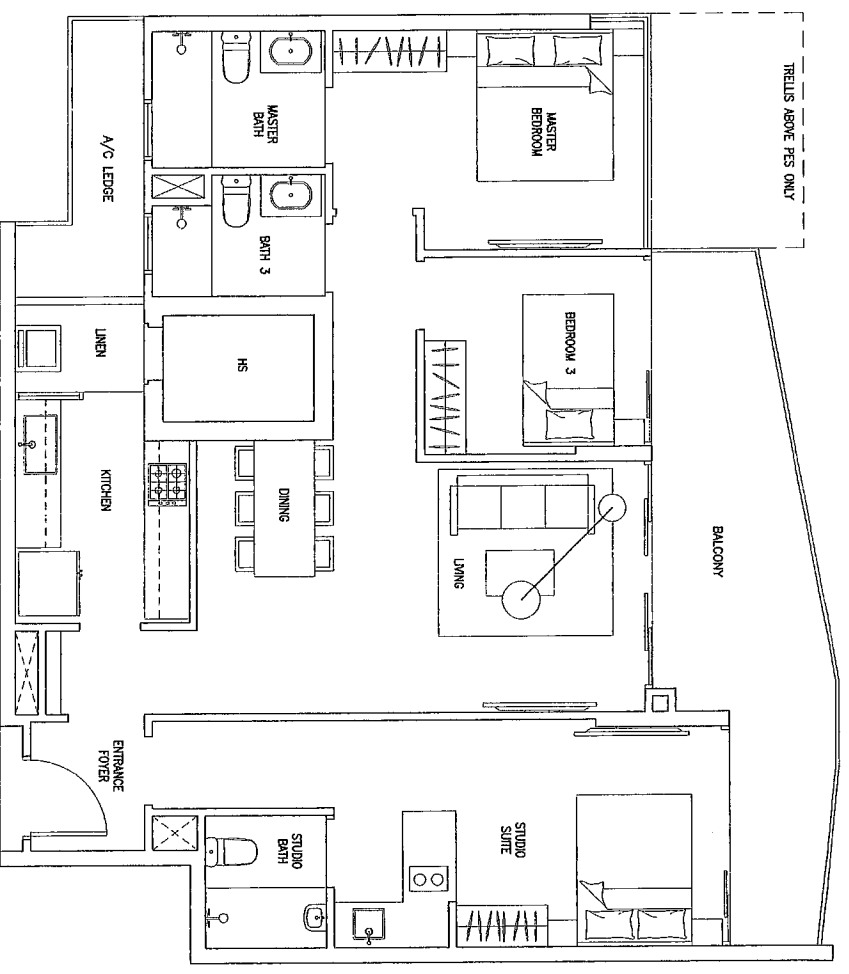
Type C10-DK

sqm/ sqft

#02-44	#02-52
#04-44	#04-52
#06-44	#06-52
	#08-52
	#10-52
	#12-52



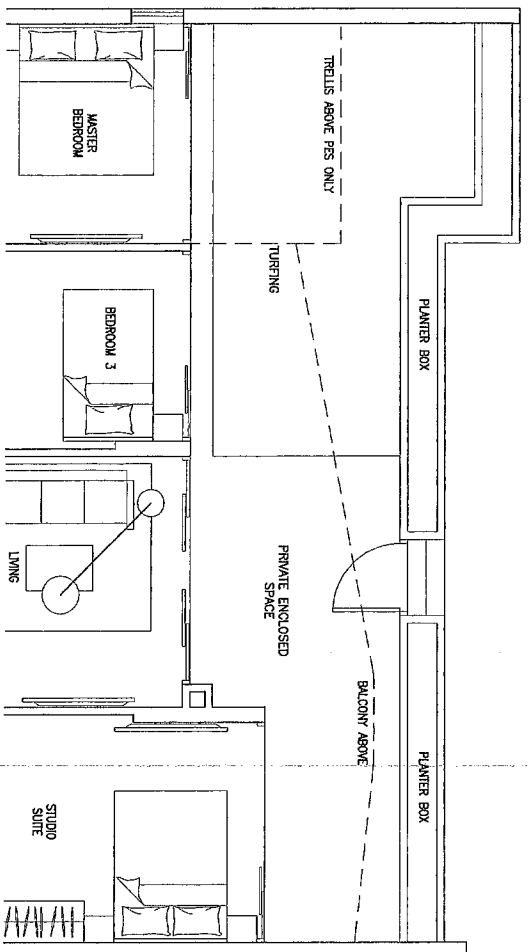
The plans are subject to change as may be required or approved by the relevant authorities. These are not drawn to scale and are for the purpose of a visual representation of the different layouts that are available. All areas are approximate and subject to final survey. The developer and its agents cannot be held liable for any inaccuracies.



Type C11-DK

sqm/ sqft

#02-21	#02-25
#04-21	#04-25
#06-21	#06-25
#08-21	#08-25
#09-21	#09-25
#10-21	#10-25
#11-21	#11-25
#12-25	

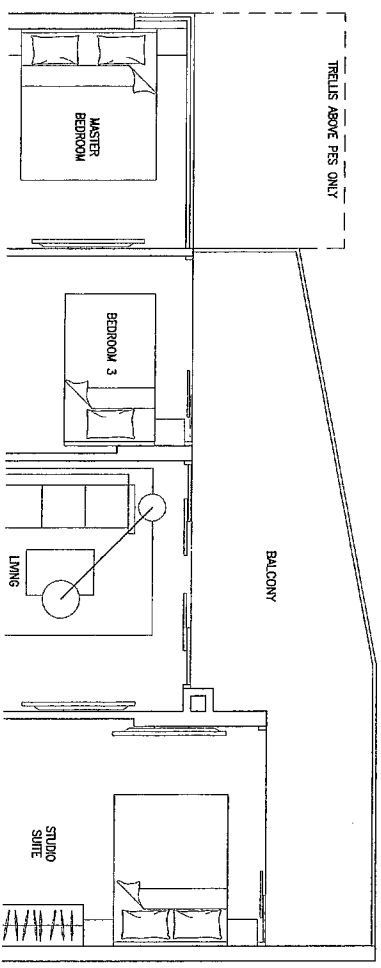


Type C11-DK(P)

sqm/ sqft

(Mirrored Units)

#01-10	#01-21	#01-25
--------	--------	--------

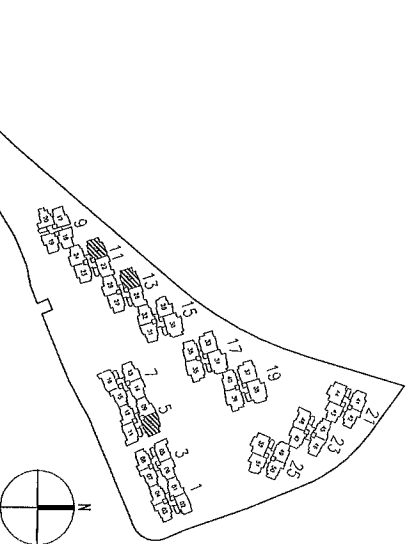


Type C11-DK

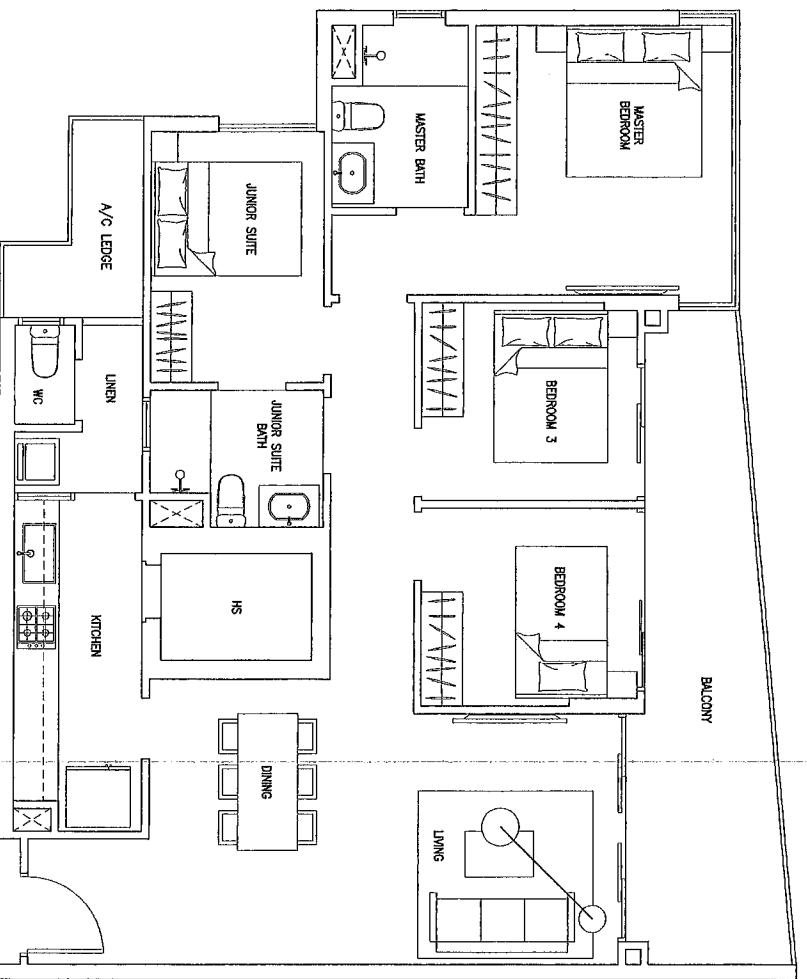
sqm/ sqft

(Mirrored Units)

#02-10 to #12-10	#03-21	#03-25
	#05-21	#05-25
	#07-21	#07-25



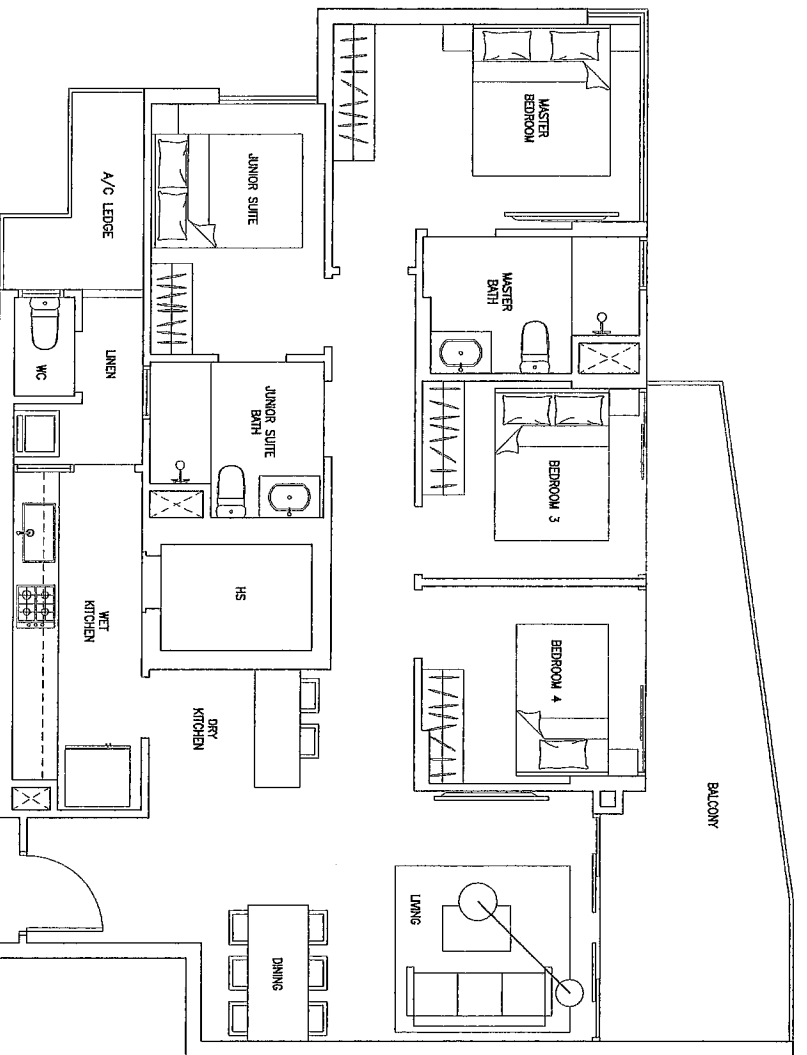
The plans are subject to change as may be required or approved by the relevant authorities. These are not drawn to scale and are for the purpose of a visual representation of the different layouts that are available. All areas are approximate and subject to final survey. The developer and its agents cannot be held liable for any inaccuracies.



Type D1

sqm/ sqft

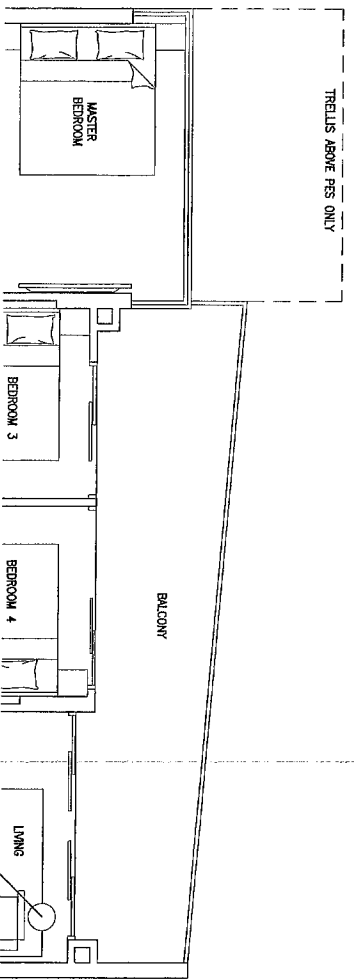
- #03-33 #03-37
- #05-33 #05-37
- #07-33 #07-37



Type D2

sqm/ sqft

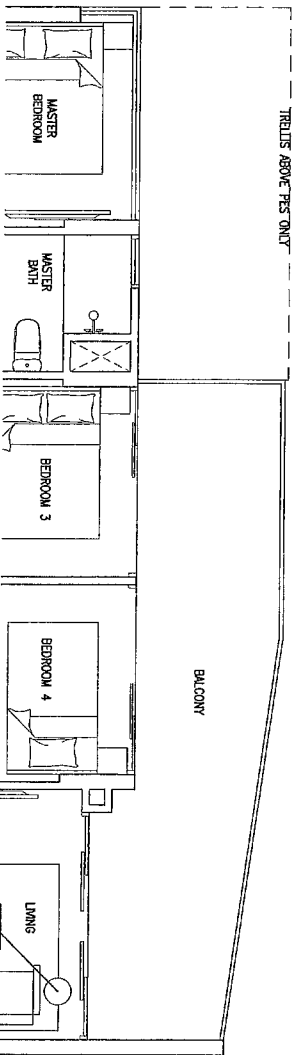
- #03-35 #03-39
- #05-35 #05-39
- #07-35 #07-39
- #09-35 #09-39
- #11-35 #11-39



Type D1

sqm/ sqft

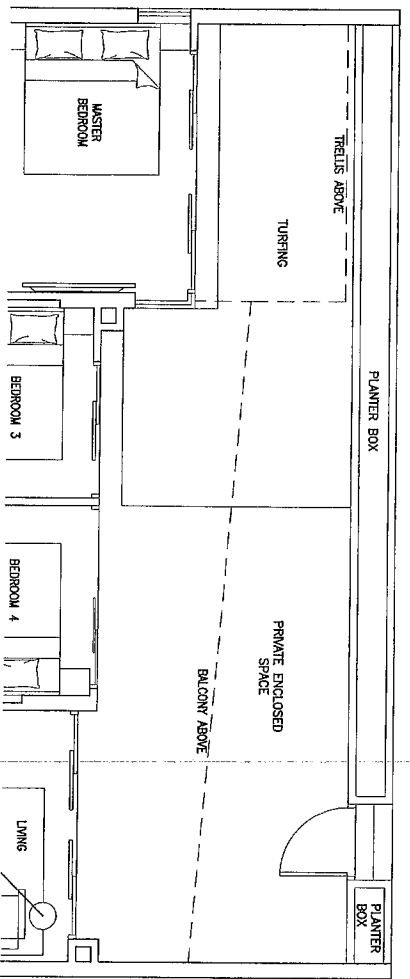
- #02-33 #02-37
- #04-33 #04-37
- #06-33 #06-37
- #08-33 #08-37
- #09-33 #09-37
- #10-33 #10-37
- #11-33 #11-37
- #12-33 #12-37



Type D2

sqm/ sqft

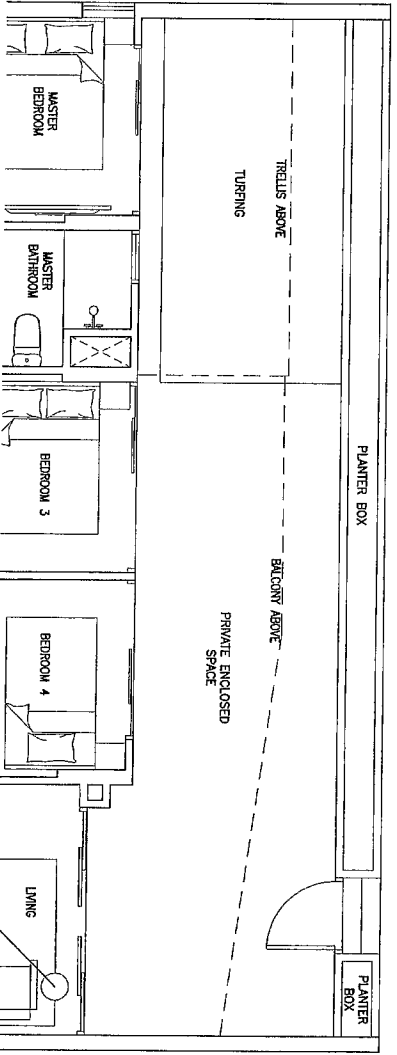
- #02-35 #02-39
- #04-35 #04-39
- #06-35 #06-39
- #08-35 #08-39
- #10-35 #10-39
- #12-35 #12-39



Type D1(P)

sqm/ sqft

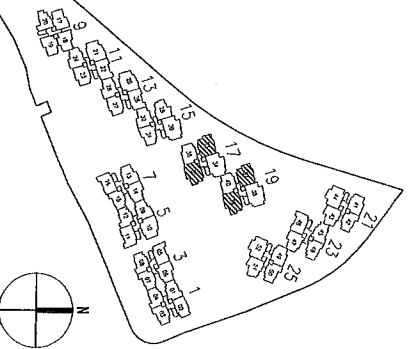
- #01-33 #01-37



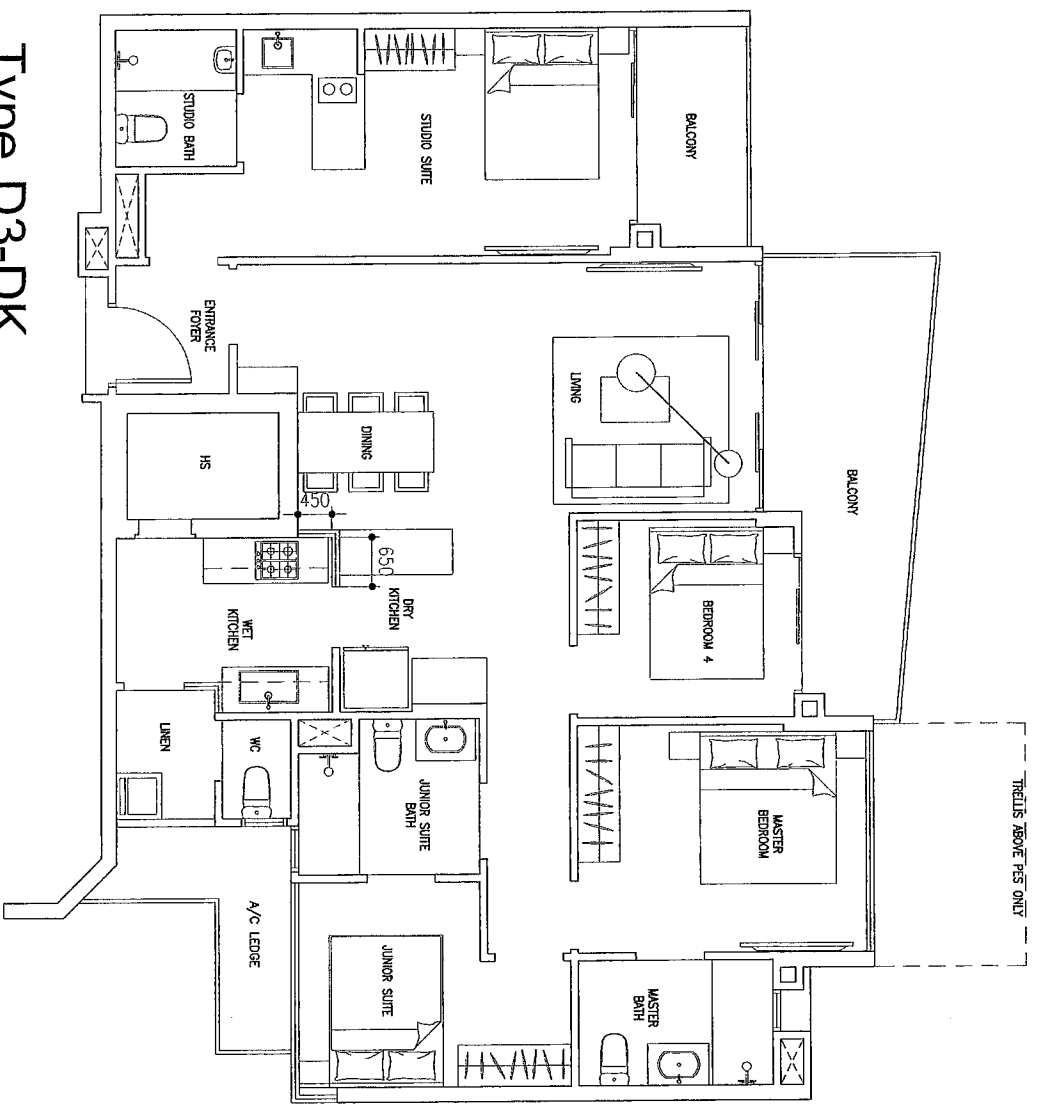
Type D2(P)

sqm/ sqft

- #01-35 #01-39

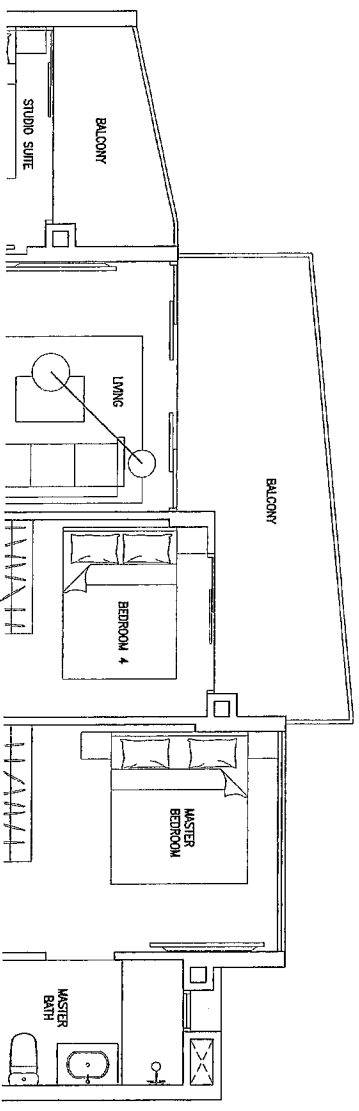


The plans are subject to change as may be required or approved by the relevant authorities. These are not drawn to scale and are for the purpose of a visual representation of the different layouts that are available. All areas are approximate and subject to final survey. The developer and its agents cannot be held liable for any inaccuracies.



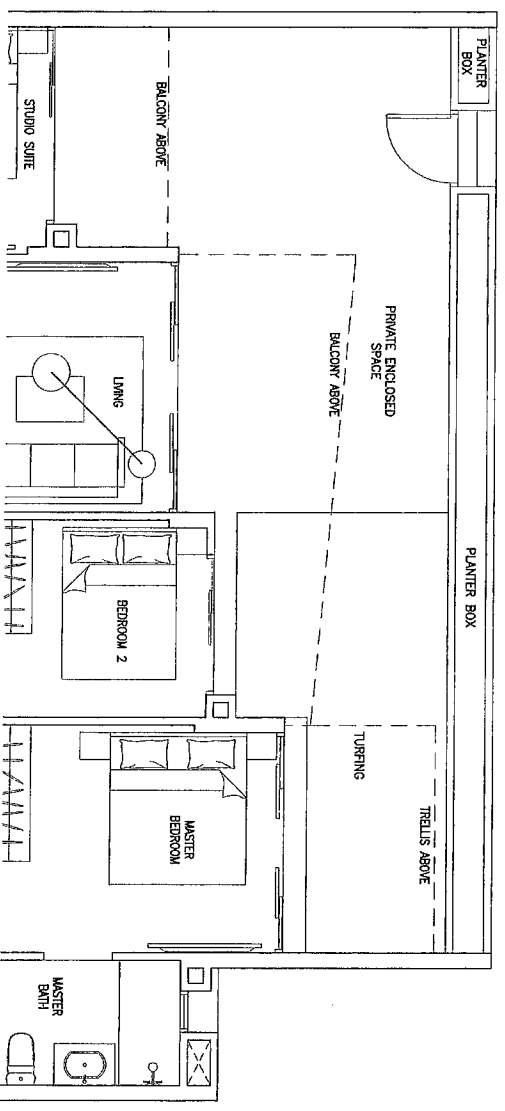
Type D3-DK

sqm/ sqft	#02-30	#02-34	#02-38
	#04-30	#04-34	#04-38
	#06-30	#06-34	#06-38
	#08-30	#08-34	#08-38
	#09-30	#09-34	#09-38
	#10-30	#10-34	#10-38
	#11-30	#11-34	#11-38
	#12-30	#12-34	#12-38



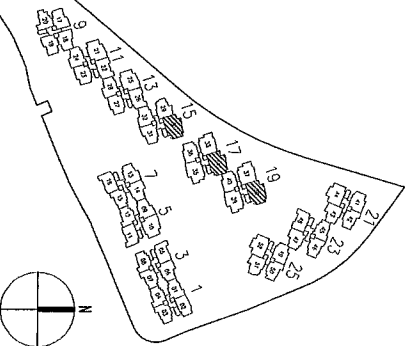
Type D3-DK

sqm/ sqft	#03-30	#03-34	#03-38
	#05-30 <td>#05-34 <td>#05-38</td> </td>	#05-34 <td>#05-38</td>	#05-38
	#07-30 <td>#07-34 <td>#07-38</td> </td>	#07-34 <td>#07-38</td>	#07-38

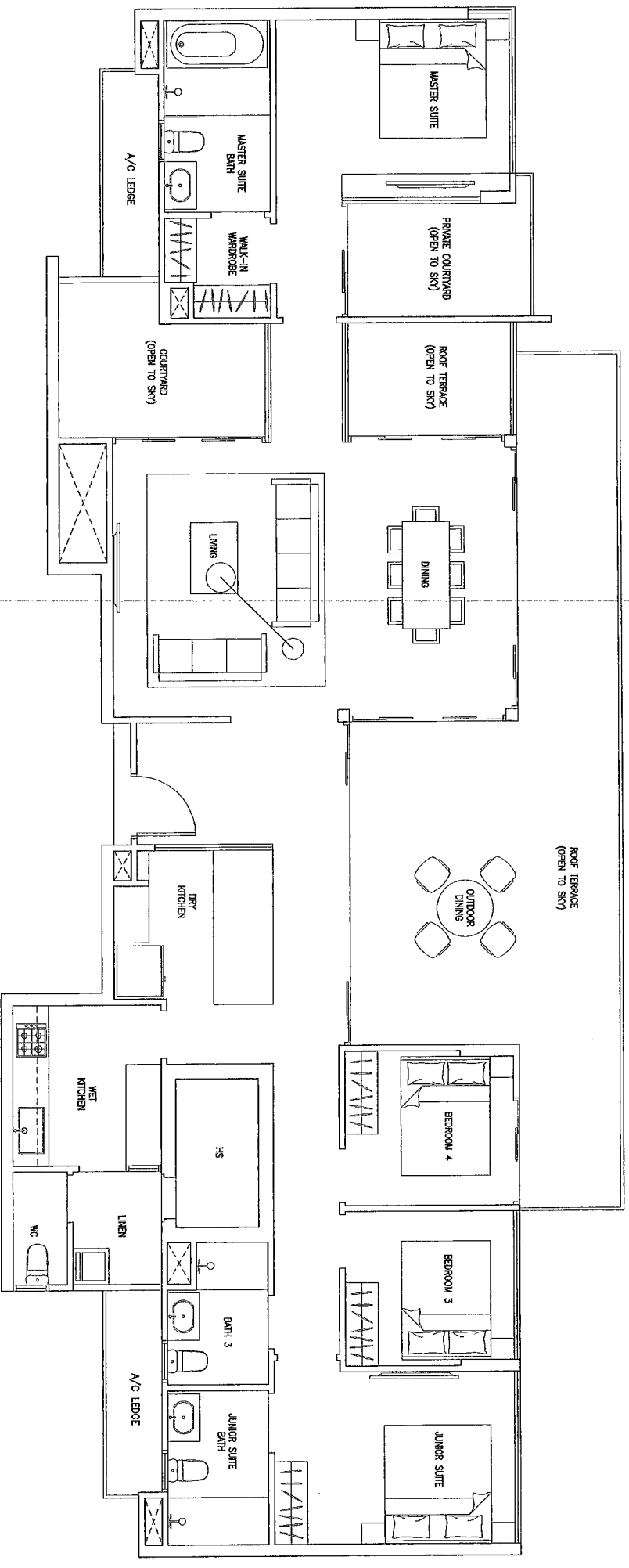


Type D3-DK(P)

sqm/ sqft	#01-30	#01-34	#01-38
-----------	--------	--------	--------



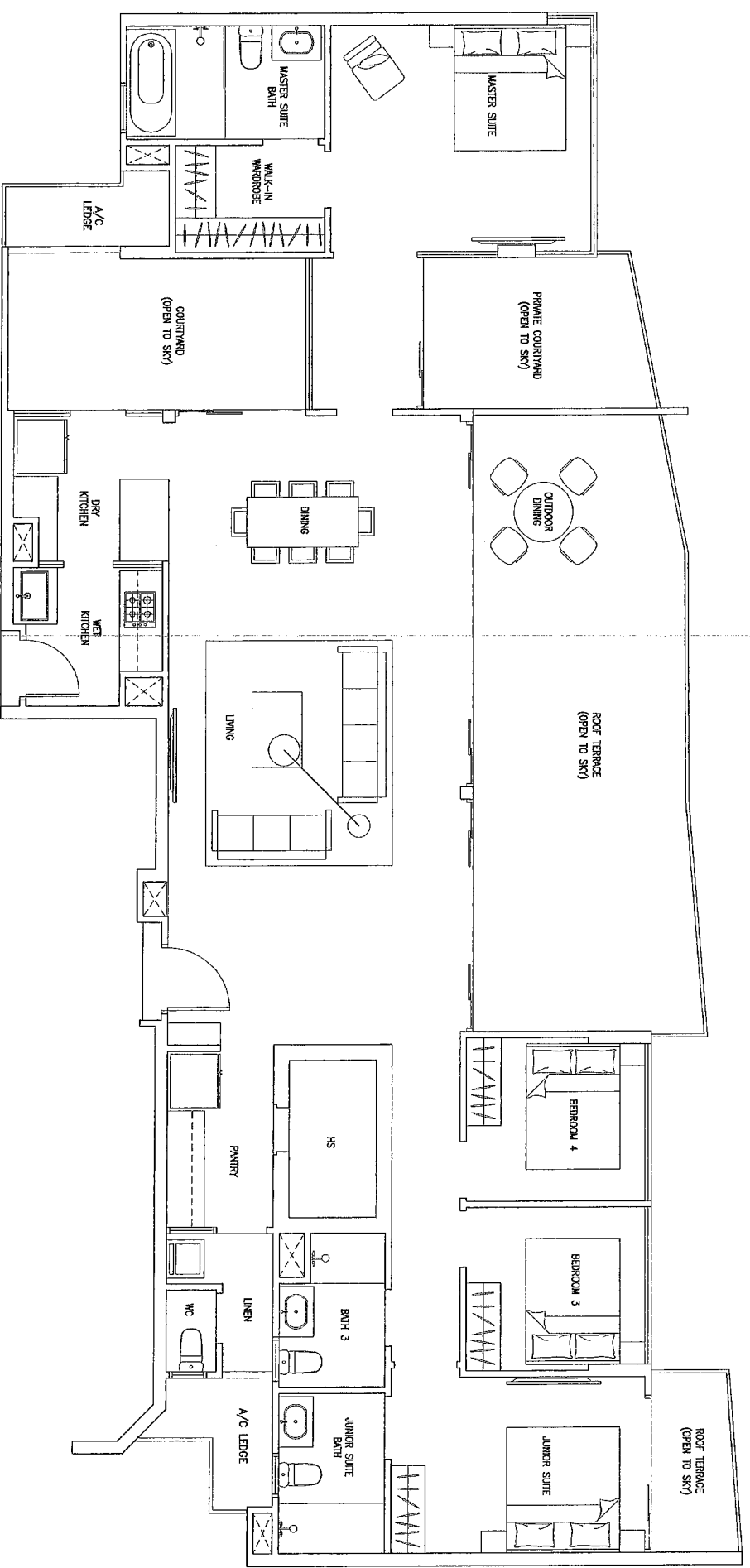
The plans are subject to change as may be required or approved by the relevant authorities.
 These are not drawn to scale and are for the purpose of a visual representation of the different layouts that are available.
 All areas are approximate and subject to final survey. The developer and its agents cannot be held liable for any inaccuracies.



Type PH 1

sqm/ sqft

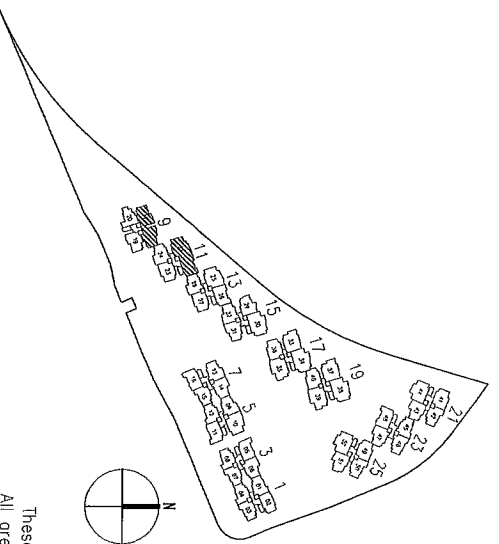
#12-17



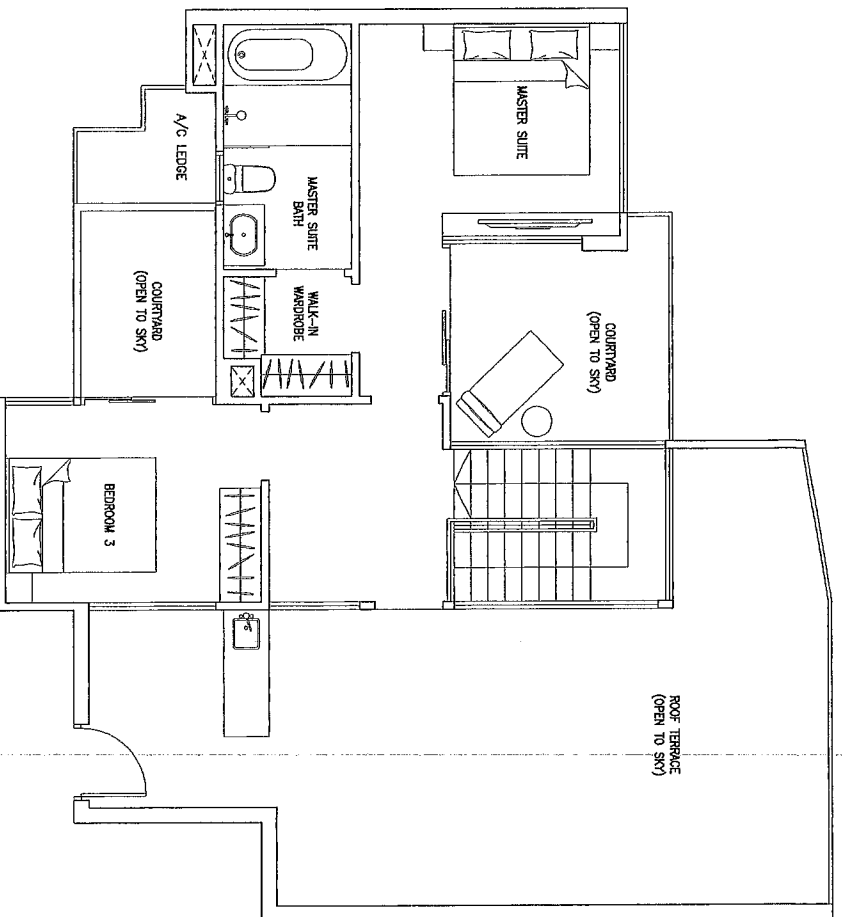
Type PH 2

sqm/ sqft

#12-21



The plans are subject to change as may be required or approved by the relevant authorities.
 These are not drawn to scale and are for the purpose of a visual representation of the different layouts that are available.
 All areas are approximate and subject to final survey. The developer and its agents cannot be held liable for any inaccuracies.



Type PH 3 (UPPER LEVEL)

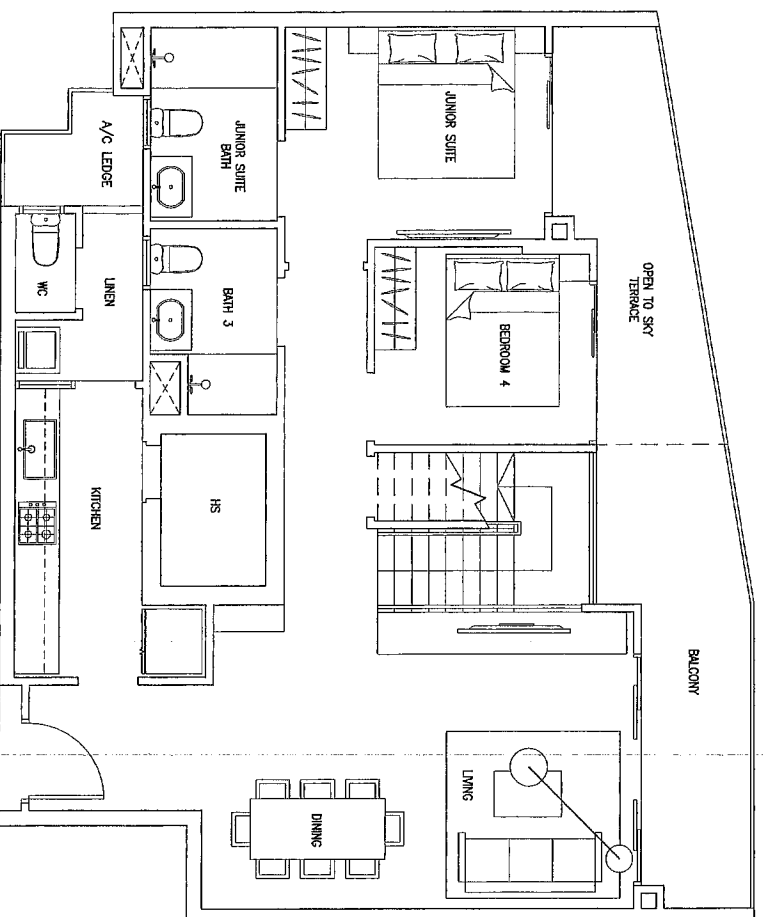
sqm/ sqft

(Mirrored Units)

#13-07

#13-08

#13-15

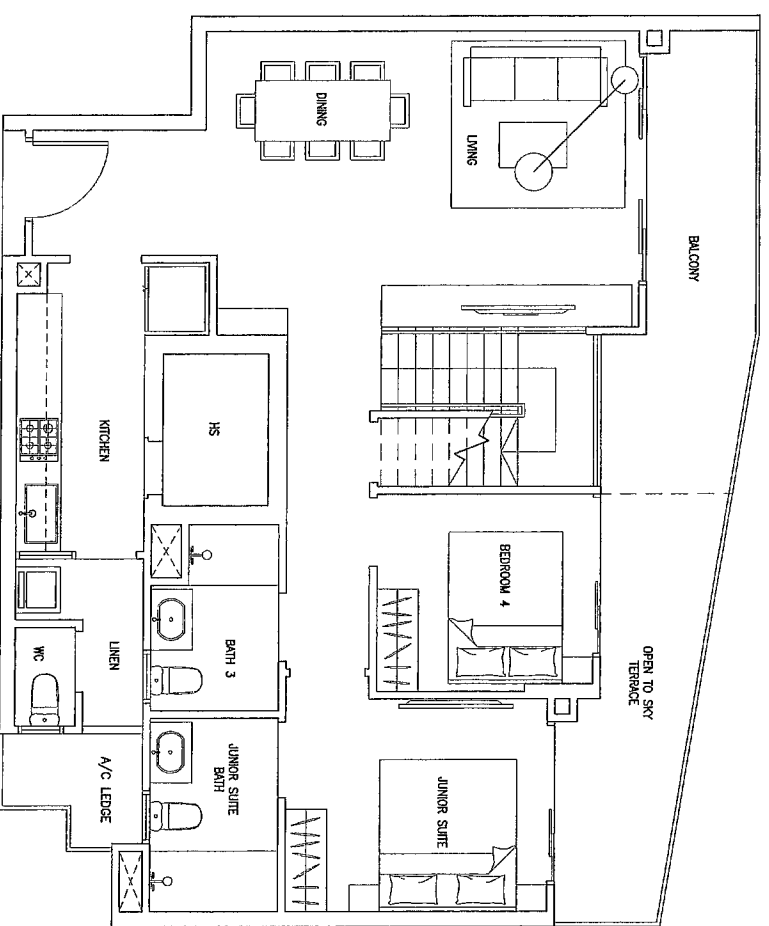


Type PH 3 (LOWER LEVEL)

sqm/ sqft

#13-07

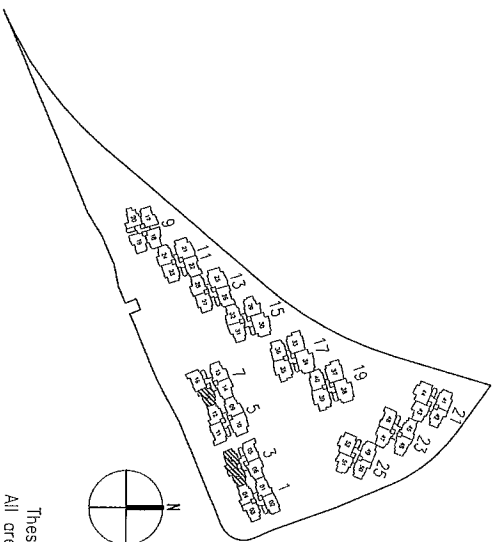
#13-15



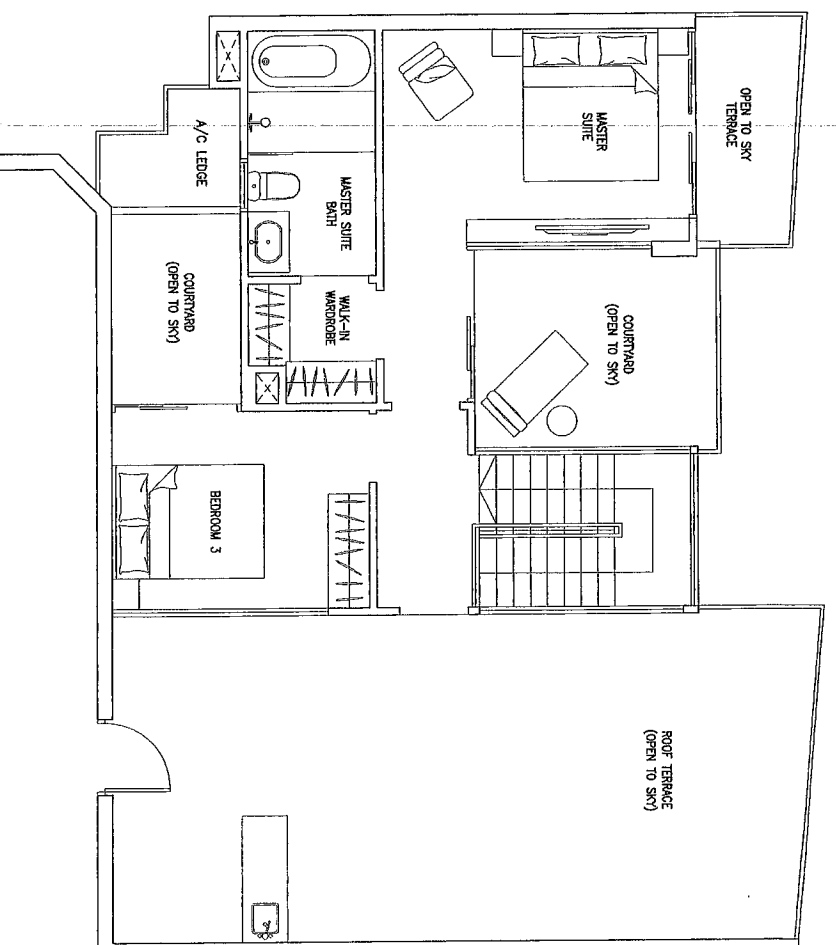
Type PH 3 (LOWER LEVEL)

sqm/ sqft

#13-08



The plans are subject to change as may be required or approved by the relevant authorities.
 These are not drawn to scale and are for the purpose of a visual representation of the different layouts that are available.
 All areas are approximate and subject to final survey. The developer and its agents cannot be held liable for any inaccuracies.

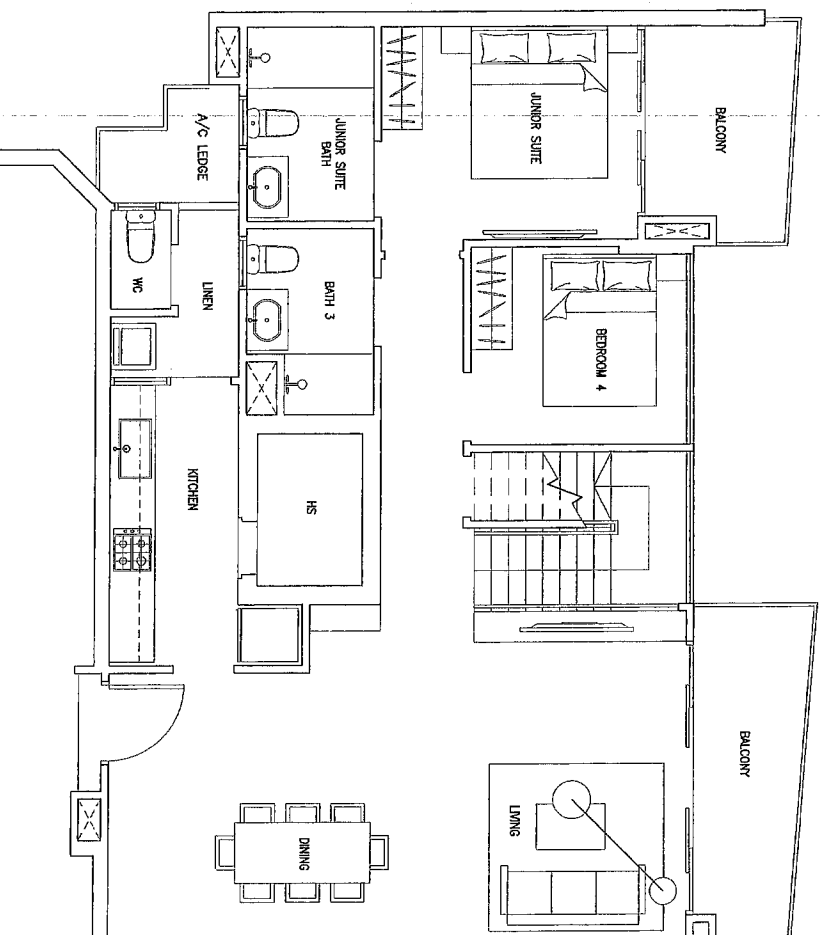


Type PH 4 (UPPER LEVEL)

sqm/ sqft

(Mirrored Units)

- #13-05
- #13-11
- #13-02
- #13-16
- #13-26
- #13-48

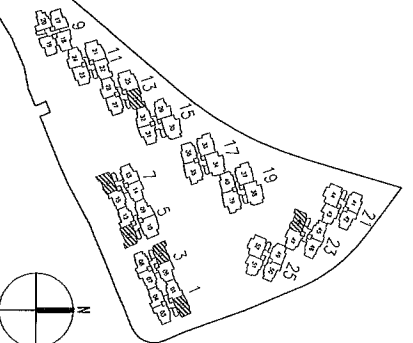


Type PH 4 (LOWER LEVEL)

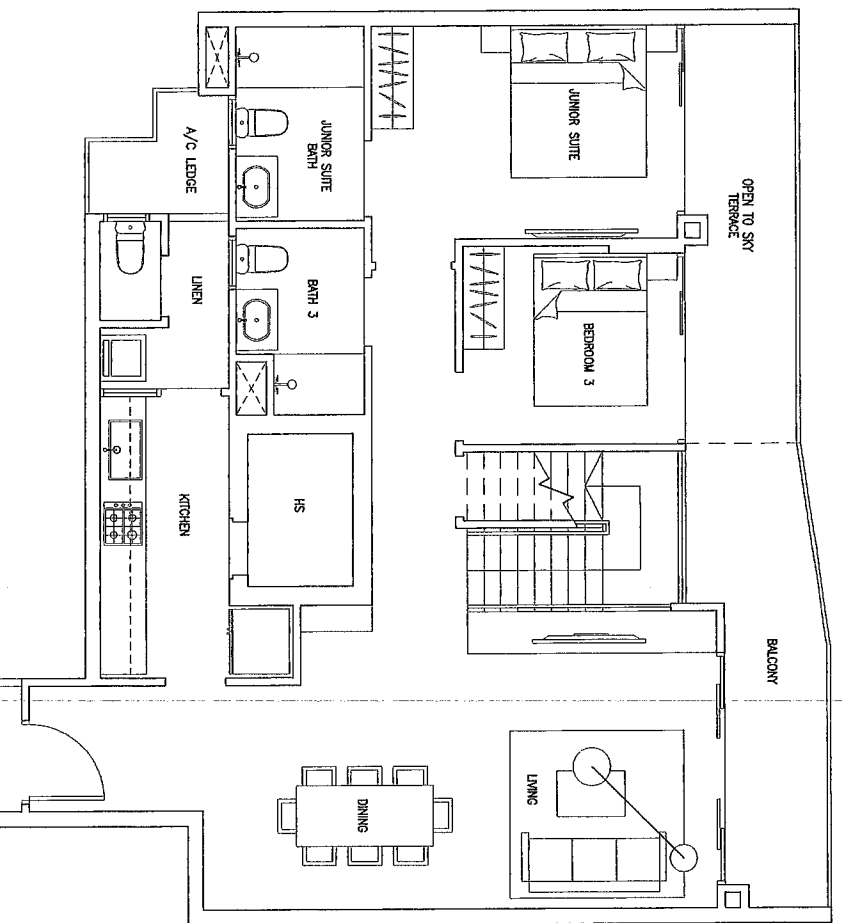
sqm/ sqft

(Mirrored Units)

- #13-05
- #13-11
- #13-02
- #13-16
- #13-26
- #13-48



The plans are subject to change as may be required or approved by the relevant authorities. These are not drawn to scale and are for the purpose of a visual representation of the different layouts that are available. All areas are approximate and subject to final survey. The developer and its agents cannot be held liable for any inaccuracies.

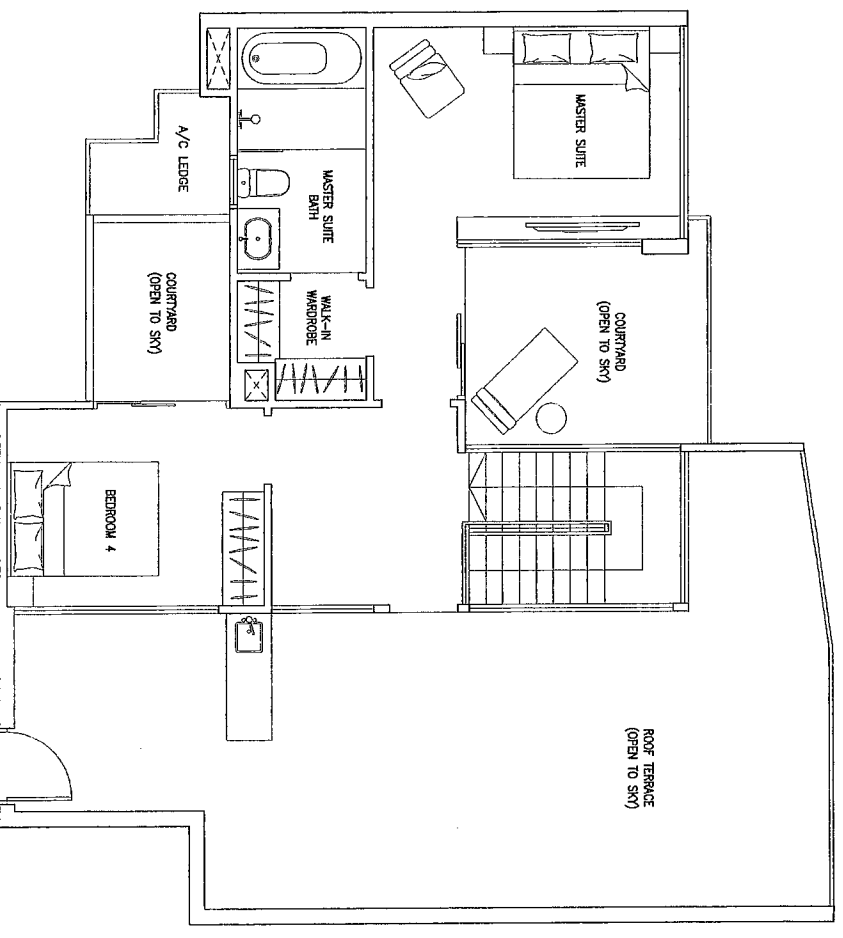


Type PH 5 (LOWER LEVEL)

sqm/ sqft

(Mirrored Units)

- #13-01 #13-06
- #13-09 #13-14
- #13-13 #13-28
- #13-47

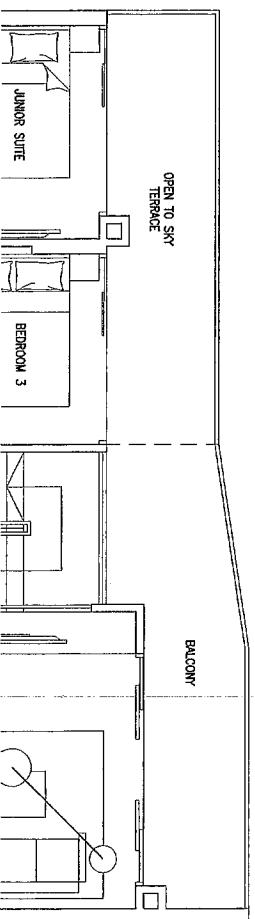


Type PH 5 (UPPER LEVEL)

sqm/ sqft

(Mirrored Units)

- #13-01 #13-06
- #13-09 #13-14
- #13-13 #13-28
- #13-31 #13-46
- #13-47

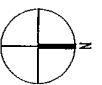
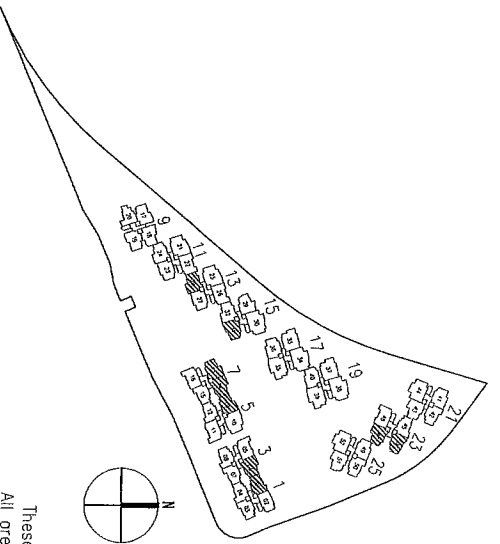


Type PH 5 (LOWER LEVEL)

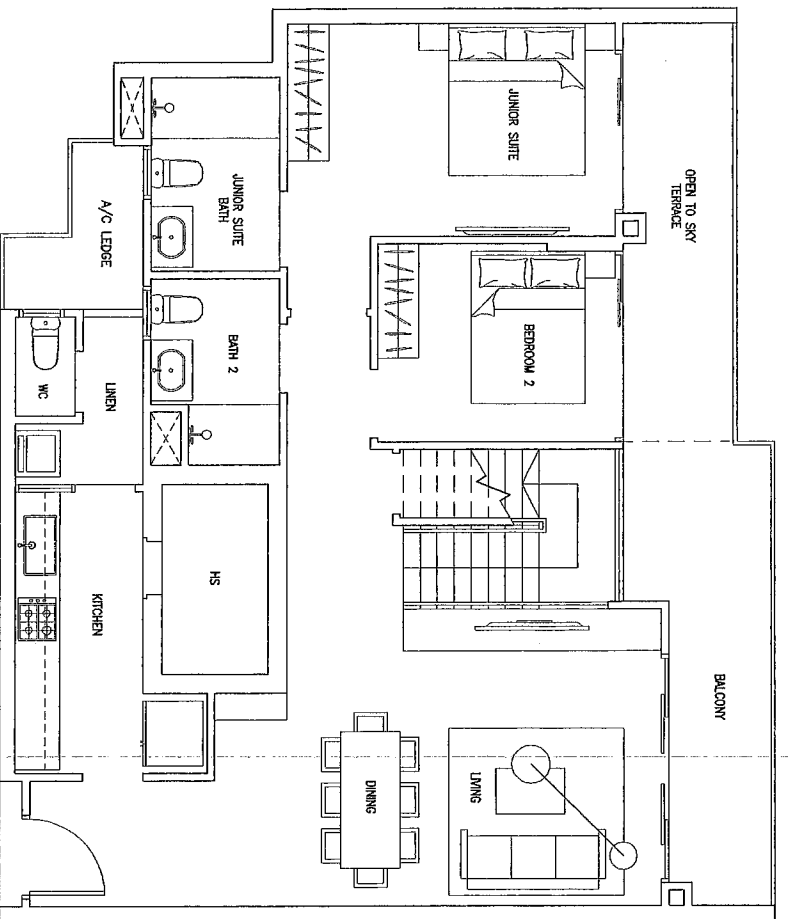
sqm/ sqft

(Mirrored Units)

- #13-31 #13-46

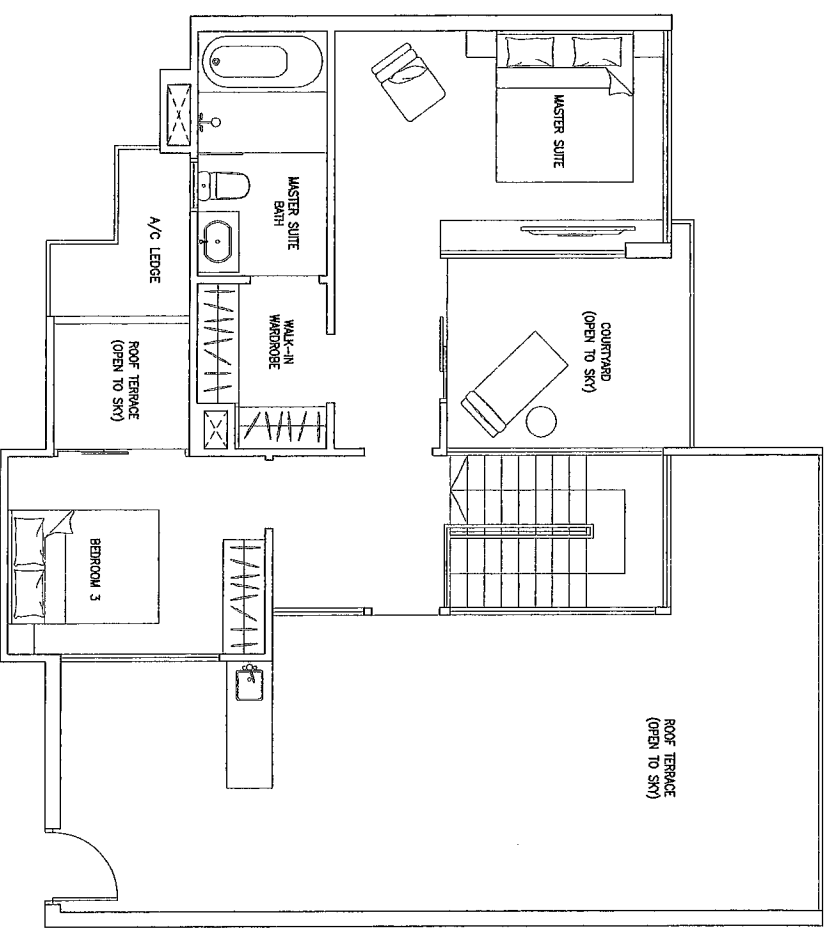


The plans are subject to change as may be required or approved by the relevant authorities.
 These are not drawn to scale and are for the purpose of a visual representation of the different layouts that are available.
 All areas are approximate and subject to final survey. The developer and its agents cannot be held liable for any inaccuracies.



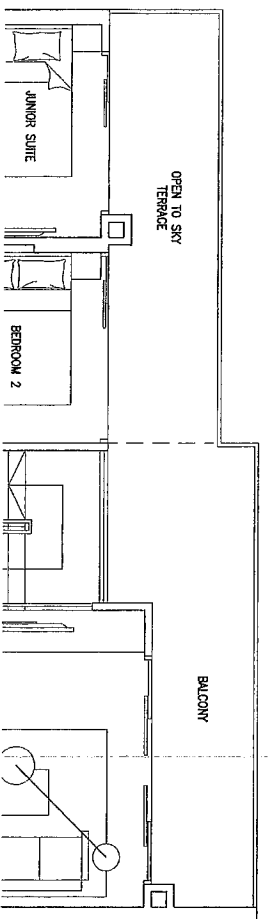
Type PH 6 (LOWER LEVEL)

sqm/ sqft
#13-43



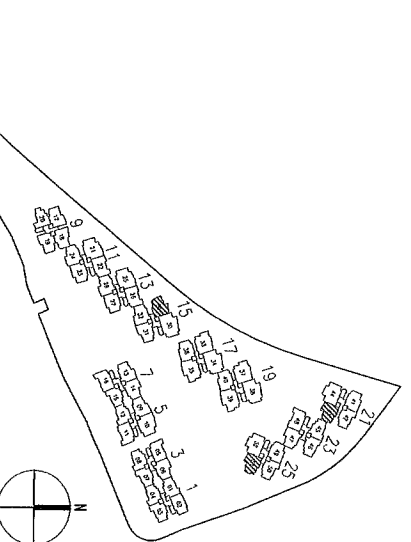
Type PH 6 (UPPER LEVEL)

sqm/ sqft
#13-29
#13-43
#13-51

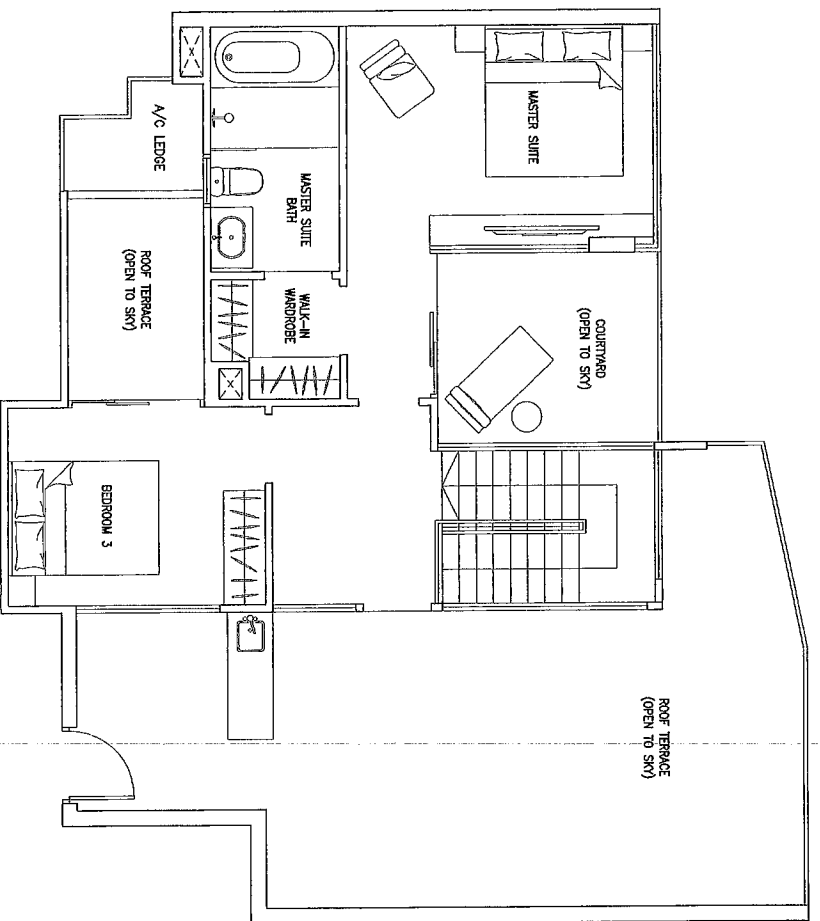


Type PH 6 (LOWER LEVEL)

sqm/ sqft
#13-29
#13-51

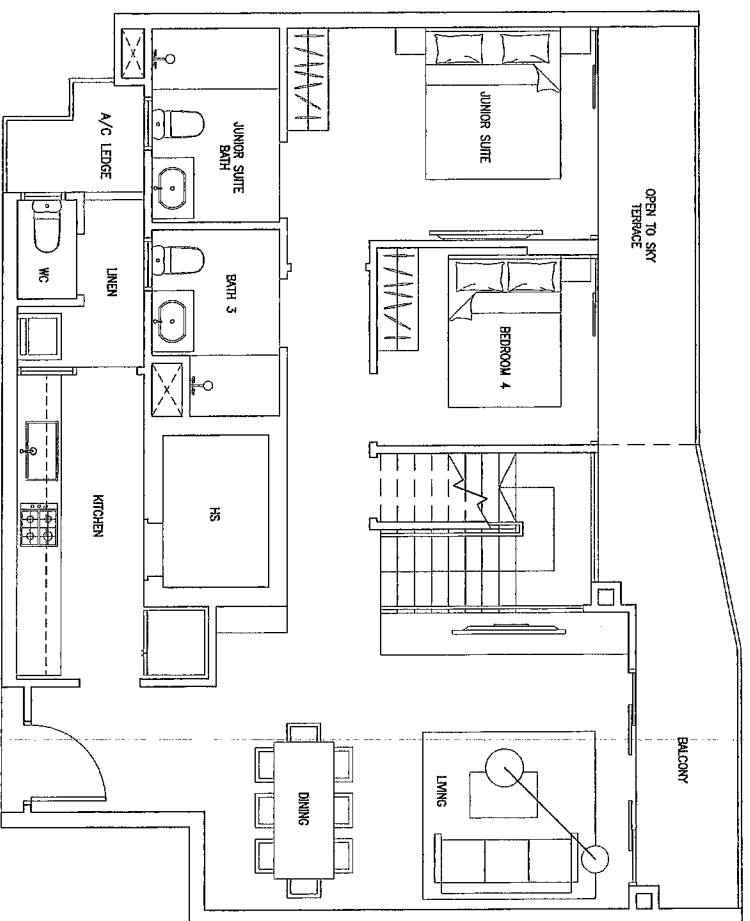


The plans are subject to change as may be required or approved by the relevant authorities.
These are not drawn to scale and are for the purpose of a visual representation of the different layouts that are available.
All areas are approximate and subject to final survey. The developer and its agents cannot be held liable for any inaccuracies.



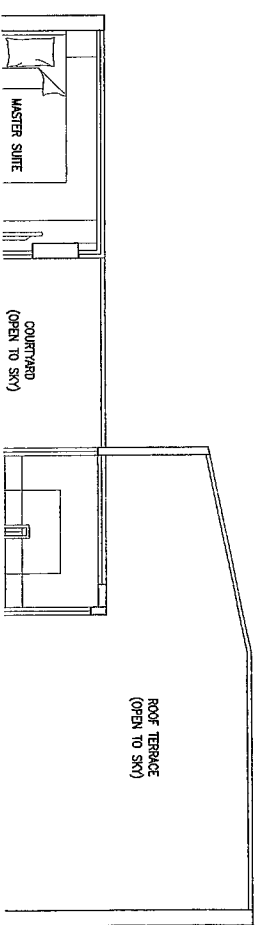
Type PH 7 (UPPER LEVEL)

sqm/ sqft
#13-49



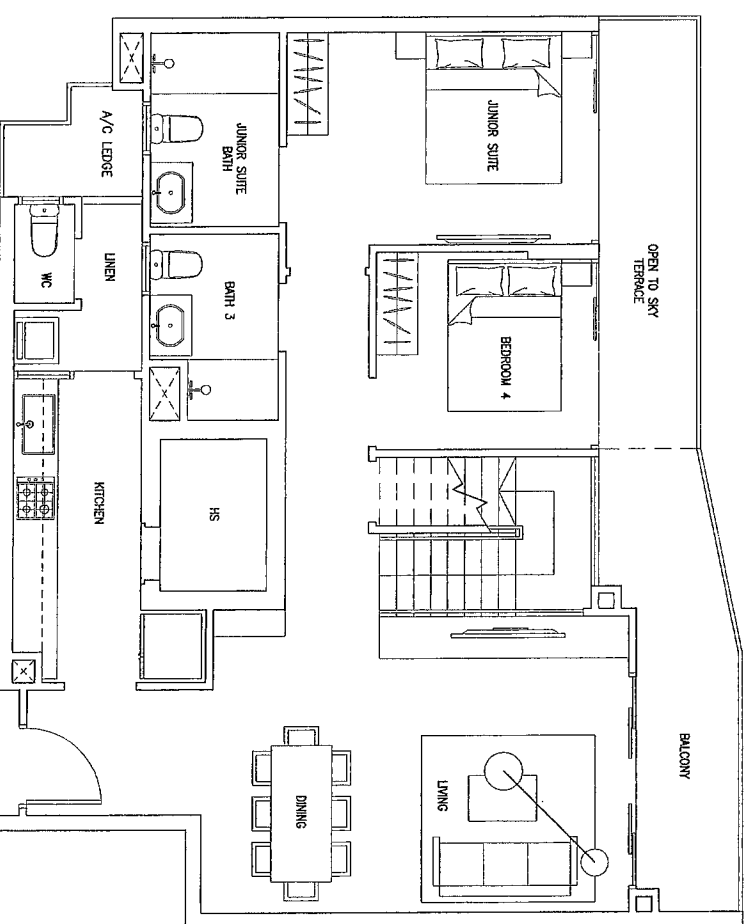
Type PH 7 (LOWER LEVEL)

sqm/ sqft
#13-49



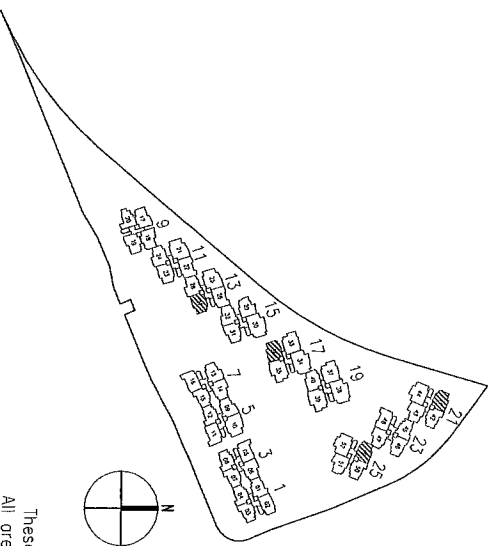
Type PH 7 (UPPER LEVEL)

sqm/ sqft
(Mirrored Units)
#13-27 #13-36
#13-41

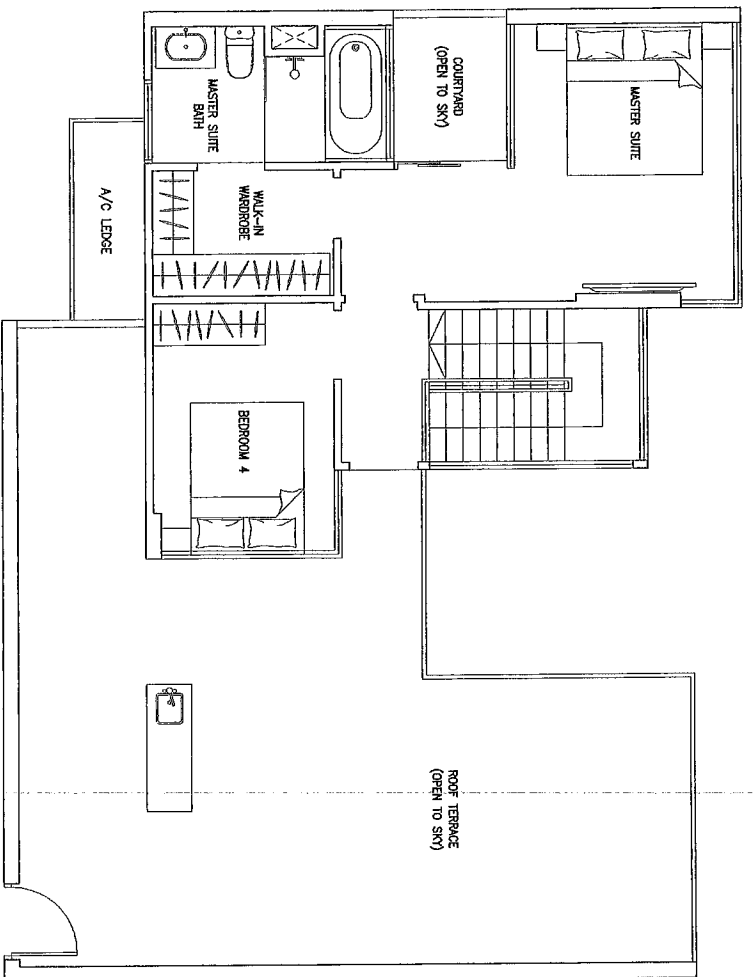


Type PH 7 (LOWER LEVEL)

sqm/ sqft
(Mirrored Units)
#13-27 #13-36
#13-41

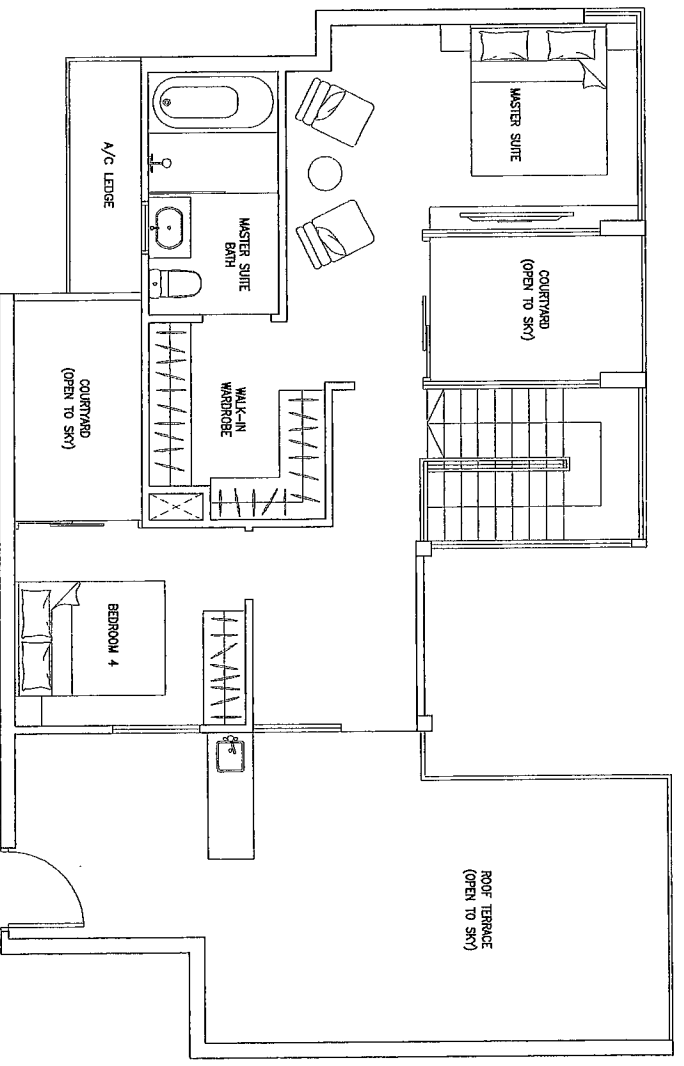


The plans are subject to change as may be required or approved by the relevant authorities. These are not drawn to scale and are for the purpose of a visual representation of the different layouts that are available. All areas are approximate and subject to final survey. The developer and its agents cannot be held liable for any inaccuracies.



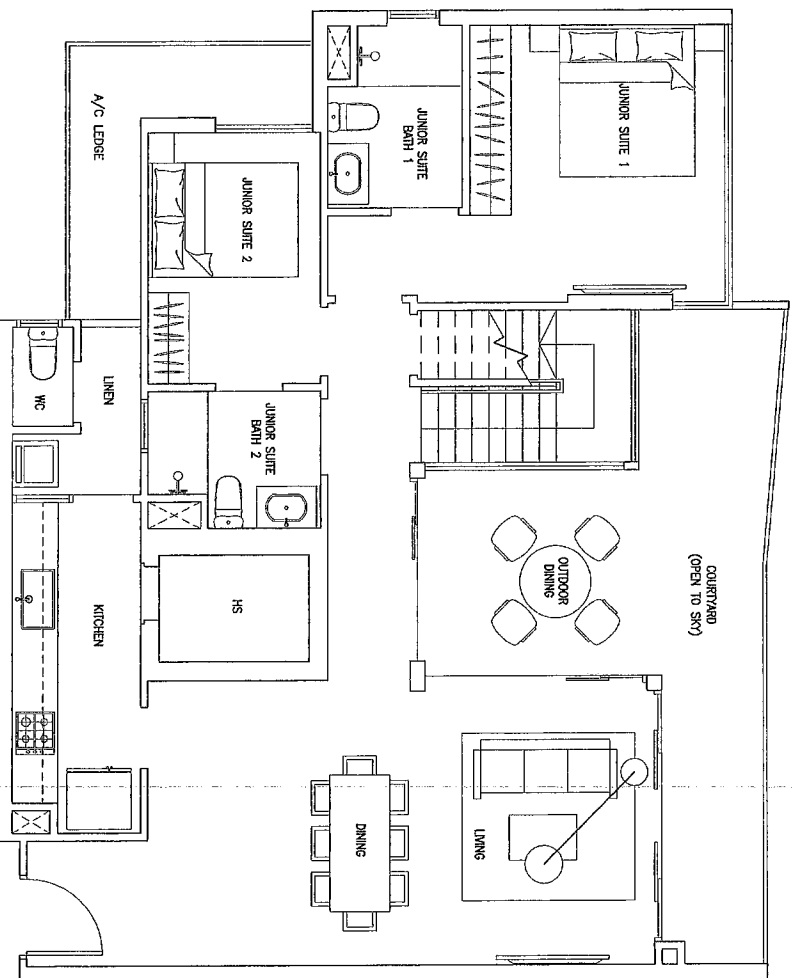
Type PH 10 (UPPER LEVEL)

sqm/ sqft
 #13-33
 #13-37



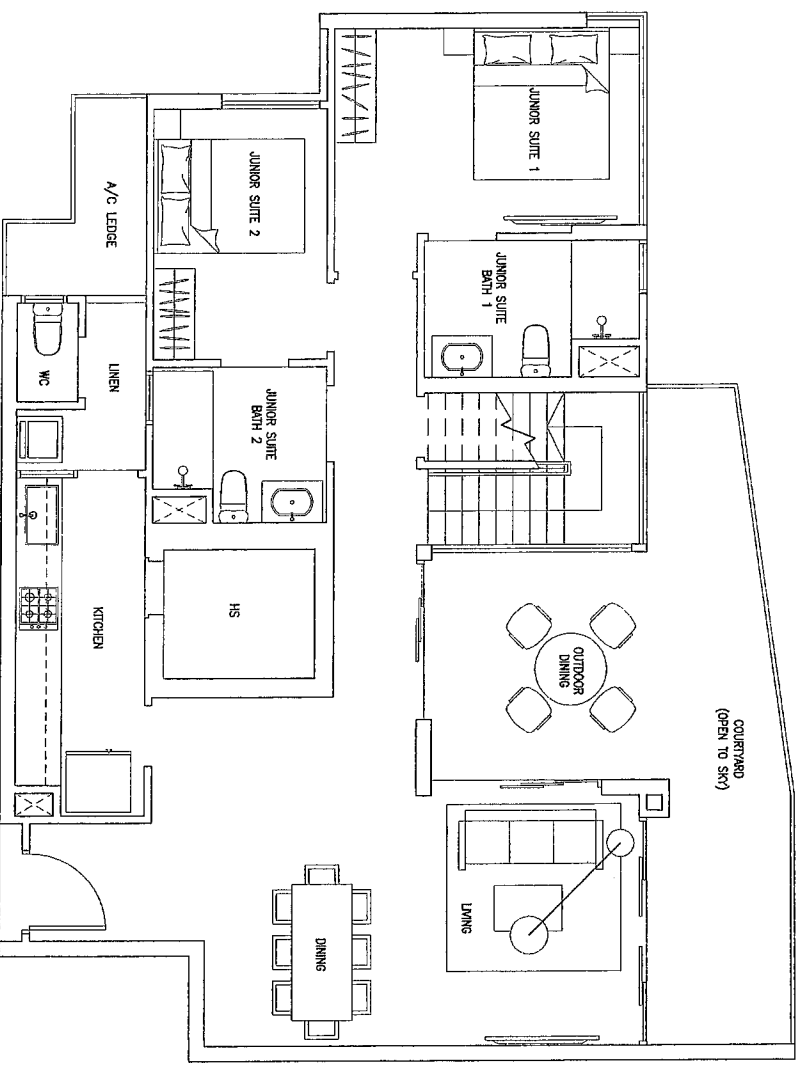
Type PH 11 (UPPER LEVEL)

sqm/ sqft
 #13-35
 #13-39



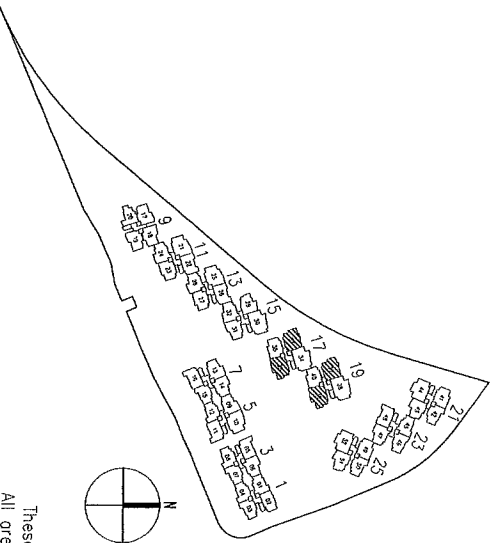
Type PH 10 (LOWER LEVEL)

sqm/ sqft
 #13-33
 #13-37

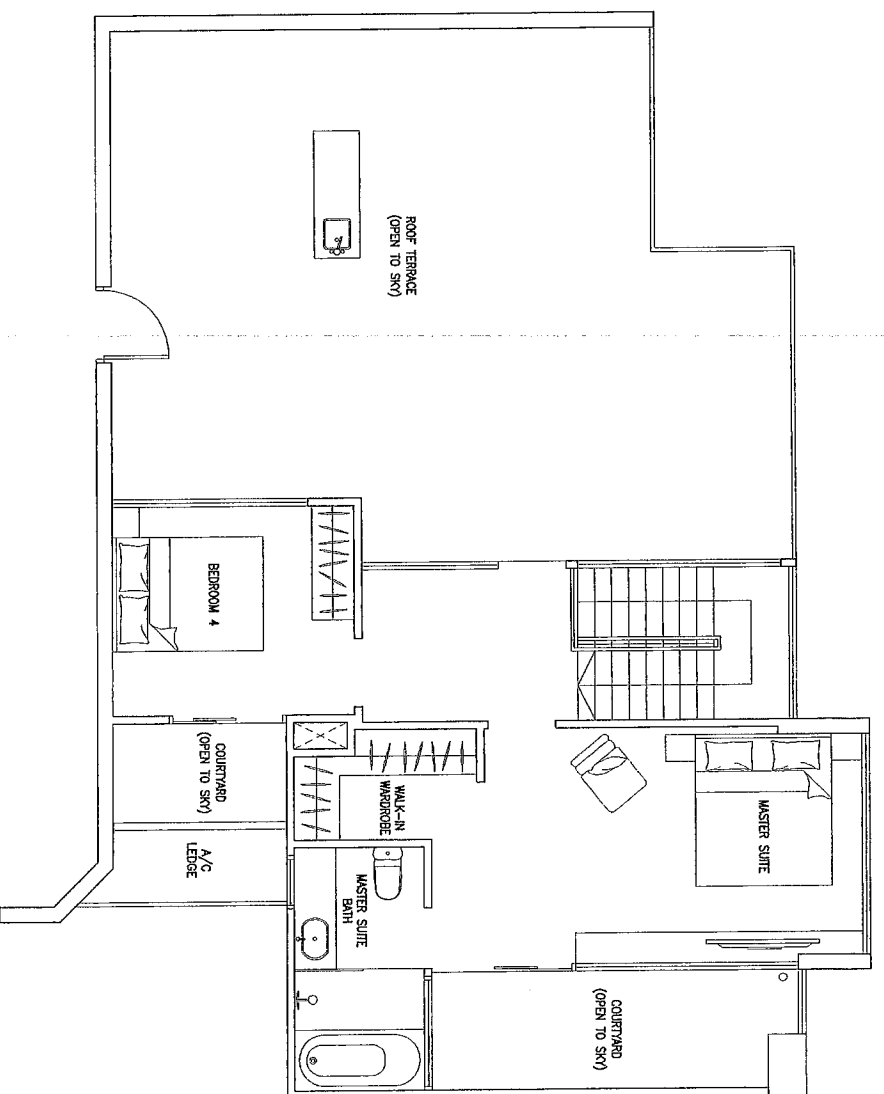


Type PH 11 (LOWER LEVEL)

sqm/ sqft
 #13-35
 #13-39



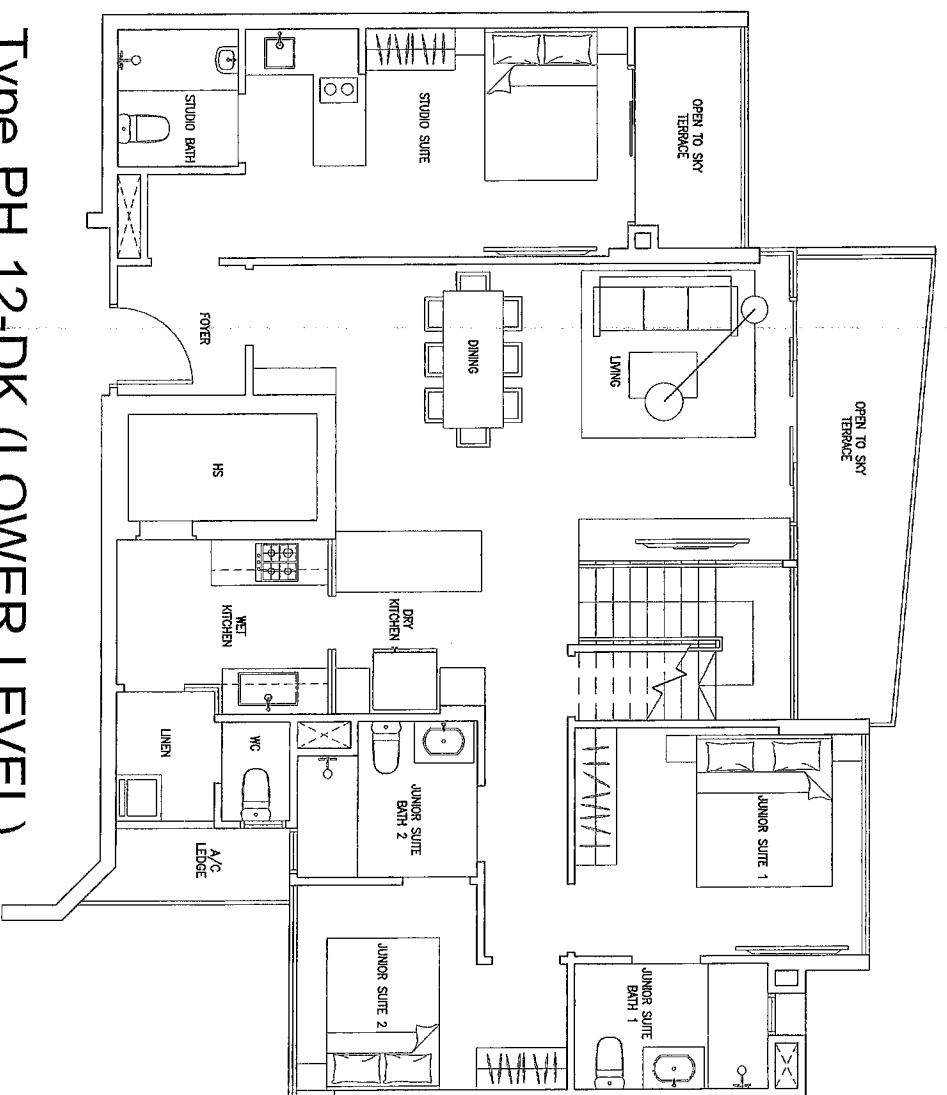
The plans are subject to change as may be required or approved by the relevant authorities.
 These are not drawn to scale and are for the purpose of a visual representation of the different layouts that are available.
 All areas are approximate and subject to final survey. The developer and its agents cannot be held liable for any inaccuracies.



Type PH 12-DK (UPPER LEVEL)

sqm/ sqft

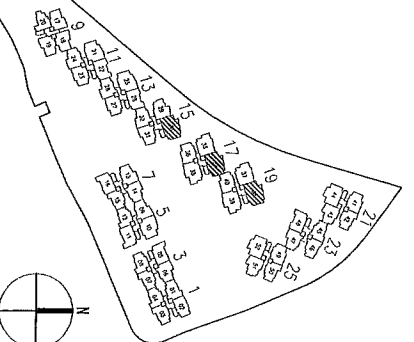
- #13-30
- #13-34
- #13-38



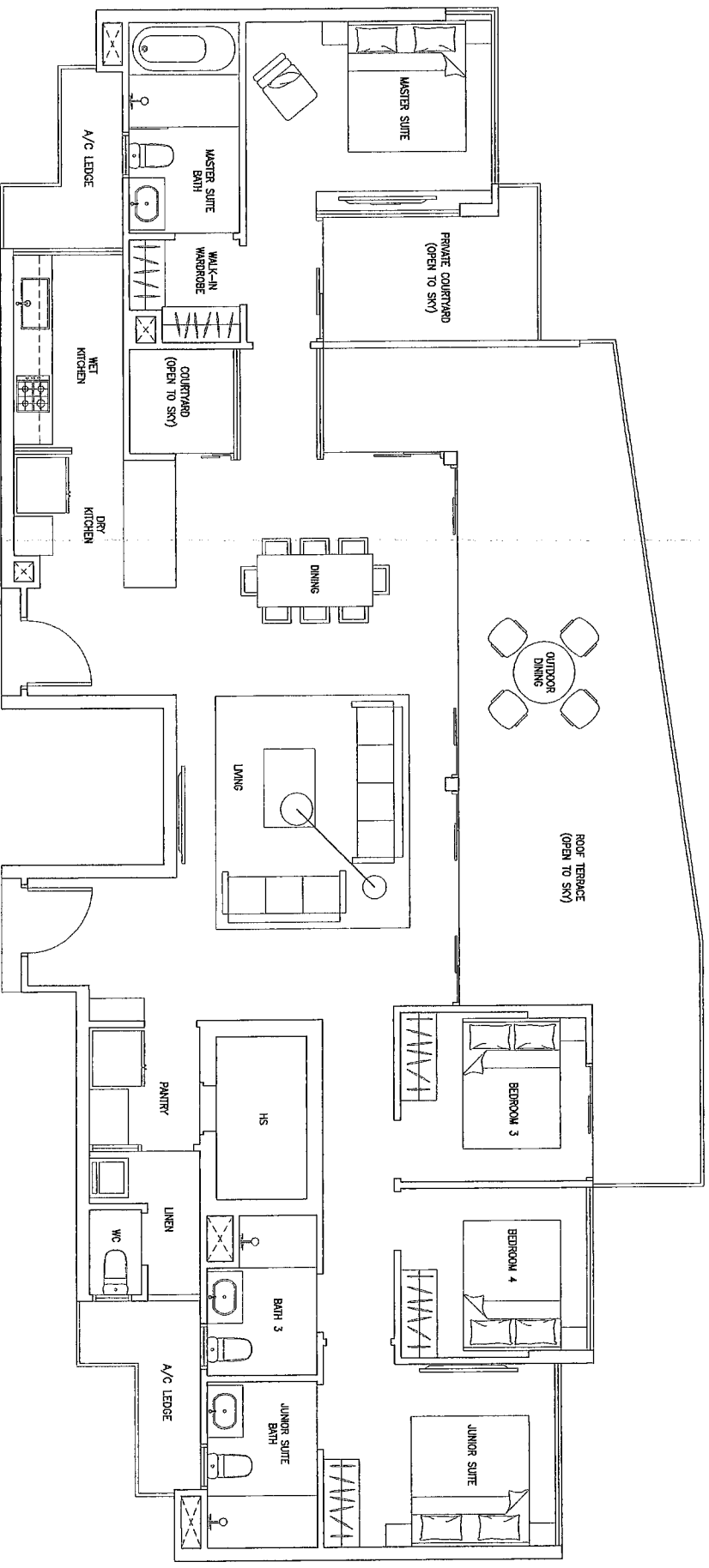
Type PH 12-DK (LOWER LEVEL)

sqm/ sqft

- #13-30
- #13-34
- #13-38



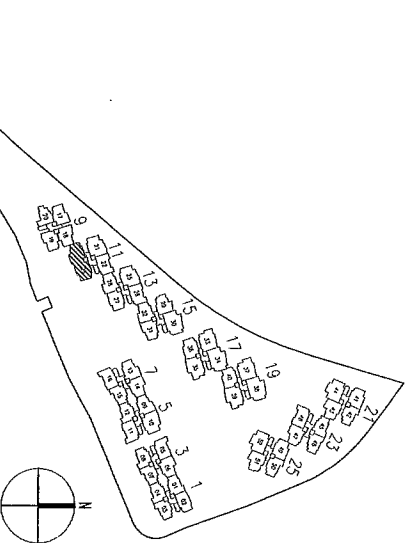
The plans are subject to change as may be required or approved by the relevant authorities.
 These are not drawn to scale and are for the purpose of a visual representation of the different layouts that are available.
 All areas are approximate and subject to final survey. The developer and its agents cannot be held liable for any inaccuracies.



Type PH 13

sqm/ sqft

#12-23



The plans are subject to change as may be required or approved by the relevant authorities.
 These are not drawn to scale and are for the purpose of a visual representation of the different layouts that are available.
 All areas are approximate and subject to final survey. The developer and its agents cannot be held liable for any inaccuracies.