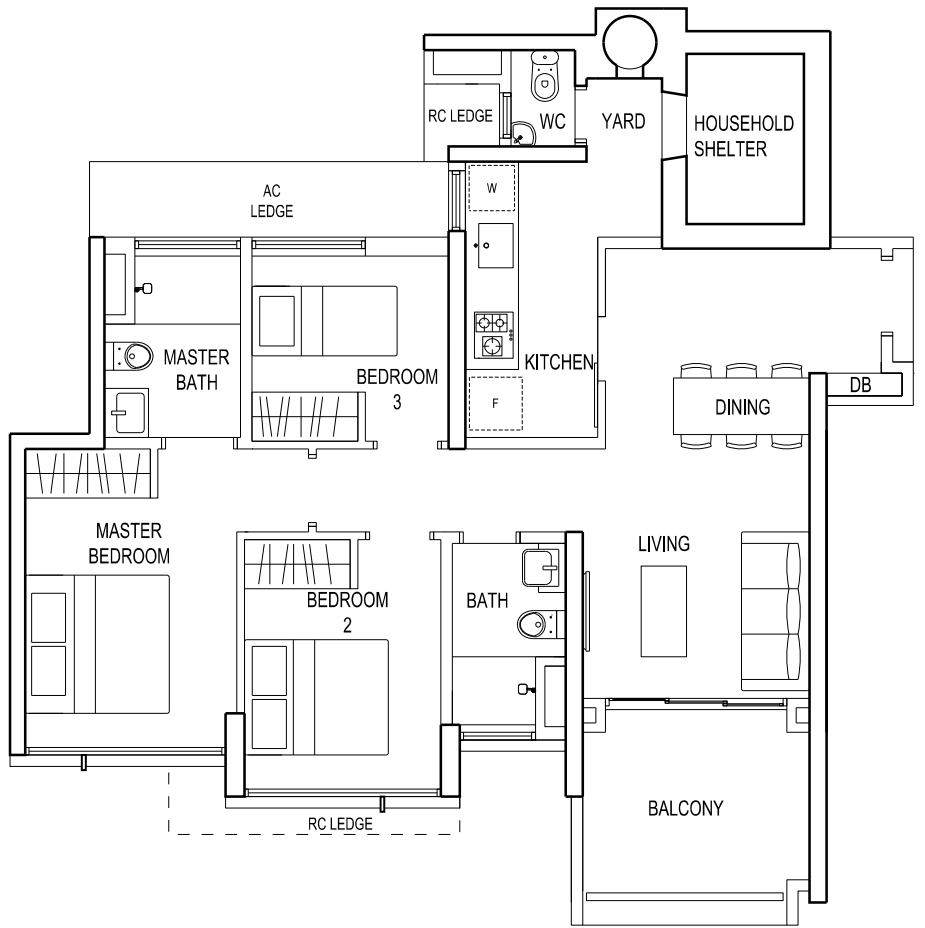


TYPE A

3-BEDROOM

93 sq m / 1001 sq ft

- #02-04 to #13-04
- #02-19 to #17-19 (Mirror-Image)
- #02-22 to #17-22
- #03-27 to #17-27 (Mirror-Image)
- #03-32 to #17-32
- #02-33 to #17-33 (Mirror-Image)
- #02-39 to #17-39 (Mirror-Image)
- #02-43 to #17-43 (Mirror-Image)
- #02-47 to #17-47 (Mirror-Image)



FIN MODULE 1

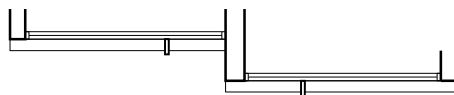
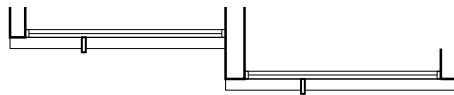
STACK 04	04, 07, 10, 13
STACK 19	02, 05, 08, 11, 14, 17, 22, 33, 39, 43, 47
STACK 27	05, 08, 11, 14, 17, 32

FIN MODULE 2

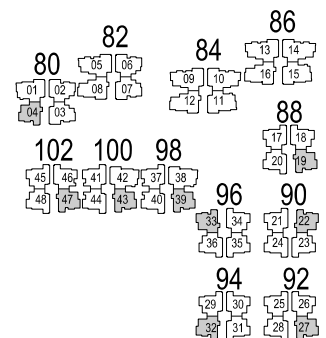
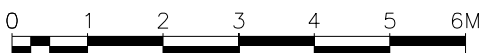
STACK 04	03, 06, 09, 12
STACK 19	04, 07, 10, 13, 16, 22, 27, 32, 33, 39, 43, 47

FIN MODULE 3

STACK 04	02, 05, 08, 11
STACK 19	03, 06, 09, 12, 15, 22, 27, 32, 33, 39, 43, 47



NOTE:
 #11-04 & #12-04 - 3.30M FLOOR-TO-FLOOR HEIGHT
 #13-04 - 3.60M FLOOR-TO-FLOOR HEIGHT (BELOW ROOF TOP)
 #02-22 & #02-33 - 3.75M FLOOR-TO-FLOOR HEIGHT
 #17-19, 22, 27, 32, - 3.25M FLOOR-TO-FLOOR HEIGHT (BELOW ROOF TOP)
 33, 39, 43, 47



*THE ABOVE PLANS ARE SUBJECT TO CHANGE AS MAY BE REQUIRED BY THE RELEVANT AUTHORITY.
 **RC LEDGE ALTERNATES IN EVERY 3 FLOORS

