

**TYPE C1**  
**4-BEDROOM**  
 122 sq m / 1313 sq ft

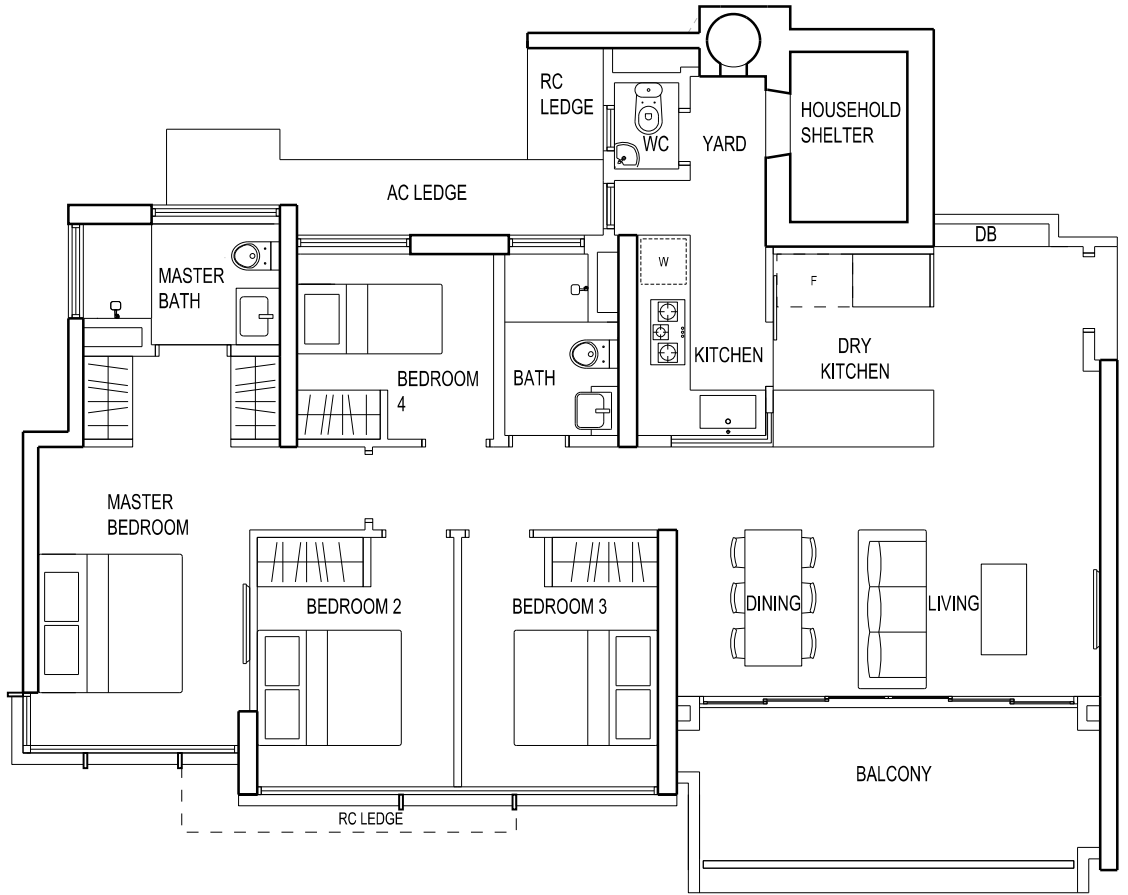
#03-01 to #13-01 (Mirror-Image)

#02-11 to #17-11 (Mirror-Image)

#02-15 to #16-15 (Mirror-Image)

#02-38 to #17-38

#02-42 to #17-42



**FIN MODULE 1**

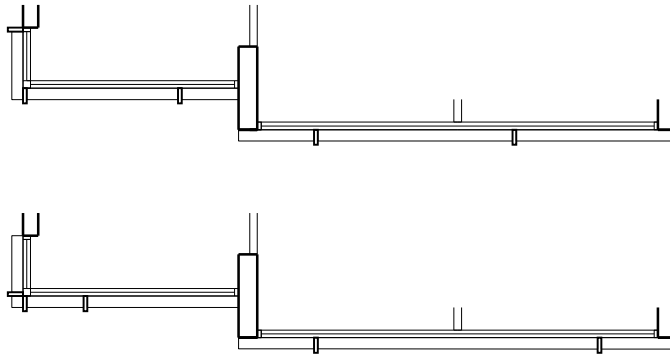
STACK 01	04, 07, 10, 13
STACK 11	02, 05, 08, 11, 14, 17, 38, 42
STACK 15	04, 07, 10, 13, 16

**FIN MODULE 2**

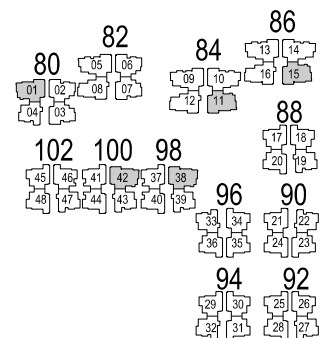
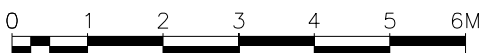
STACK 01	03, 06, 09, 12
STACK 11	04, 07, 10, 13, 16, 38, 42
STACK 15	03, 06, 09, 12, 15

**FIN MODULE 3**

STACK 01	05, 08, 11
STACK 11	03, 06, 09, 12, 15, 38, 42
STACK 15	02, 05, 08, 11, 14



- NOTE:**
- #11-01, #12-01, #15-11, #16-11 - 3.30M FLOOR-TO-FLOOR HEIGHT
  - #14-15, #15-15, #13-01, #17-11 - 3.60M FLOOR-TO-FLOOR HEIGHT (BELOW ROOF TOP)
  - #16-15, #17-38, 42 - 3.25M FLOOR-TO-FLOOR HEIGHT (BELOW ROOF TOP)



\*THE ABOVE PLANS ARE SUBJECT TO CHANGE AS MAY BE REQUIRED BY THE RELEVANT AUTHORITY.  
 \*\*RC LEDGE ALTERNATES IN EVERY 3 FLOORS

